



Samsung Public Safety Solutions

Public Safety

SAMSUNG

Public Safety Ecosystem

One Smartphone Supports Officers Regardless of Environment



In Car



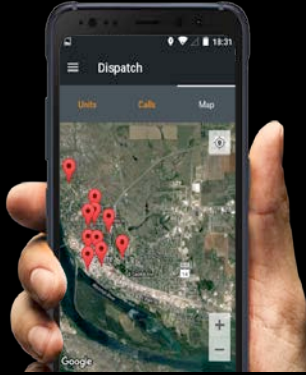
In Field



In Station

Public Safety Ecosystem

Mobile First Responder



Wearables for Public Safety



DeX in Car



Long Term Impact Plays:

Dex in Car 2.0



End Point Security Standards



LMR Transition to PS-LTE



The Long-Term Vision

FirstNet plans to offer mission critical voice services when voice over LTE functionalities meet or exceed first responders' mission critical needs.

DeX in Car Solution | Differentiators

Today: Rugged Laptop



\$3,500 cost

(average garnered from police agencies)

- Rugged laptop
- Windows OS with **paid** OS updates
- 5 year laptop recycle program (average)
- **Stays in car:** Officer never takes laptop with him

Tomorrow: Samsung DeX



\$2,500 cost

(\$800 HHP + \$1,700 screen/keyboard)

- Rugged touch screen monitor, keyboard with touch pad, Samsung Smartphone
- Android OS with **free** OS updates
- 2 year smartphone recycle program (average)
- **Fully mobile:** Officer takes phone with him

DeX in Car Solution | Differentiators

Rugged Laptop

Desktop

Scanner

Video Recorder

Audio Recorder

Camera

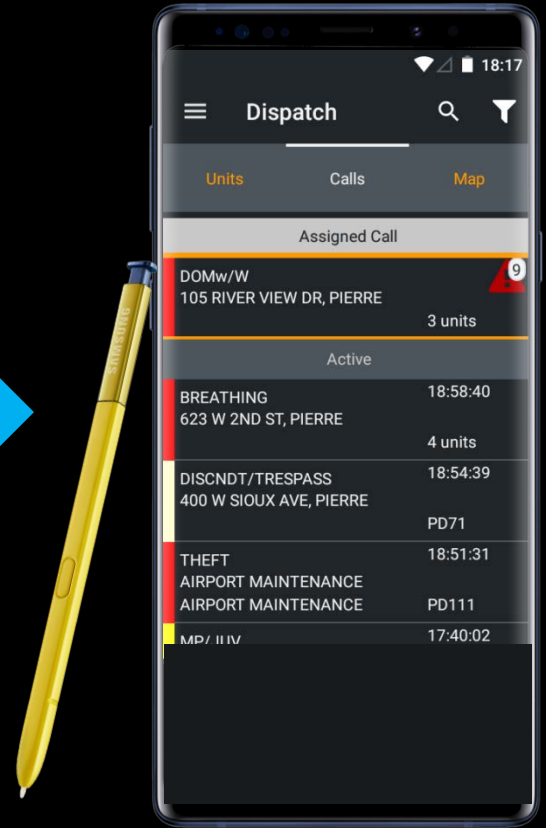
Land Mobile Radio

Signature Capture

AirCard or MiFi

Body Camera

Replaced by **1** device

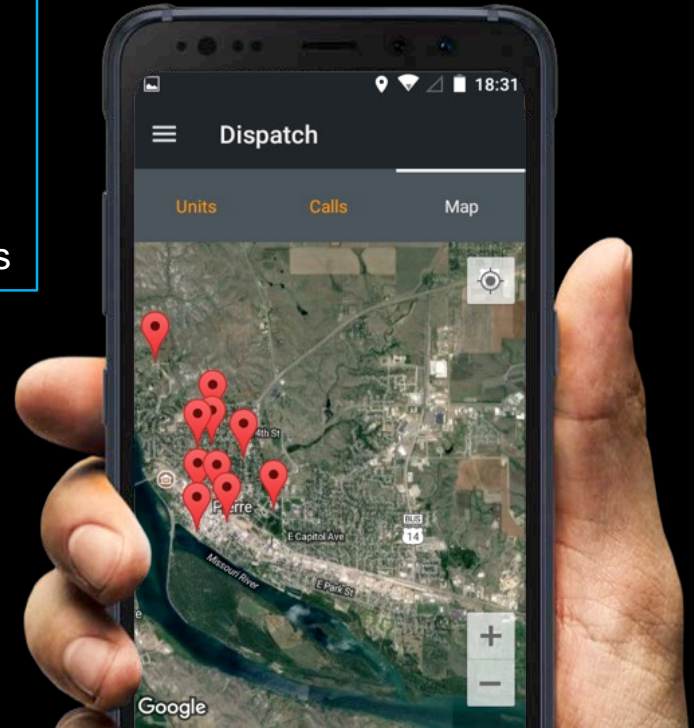
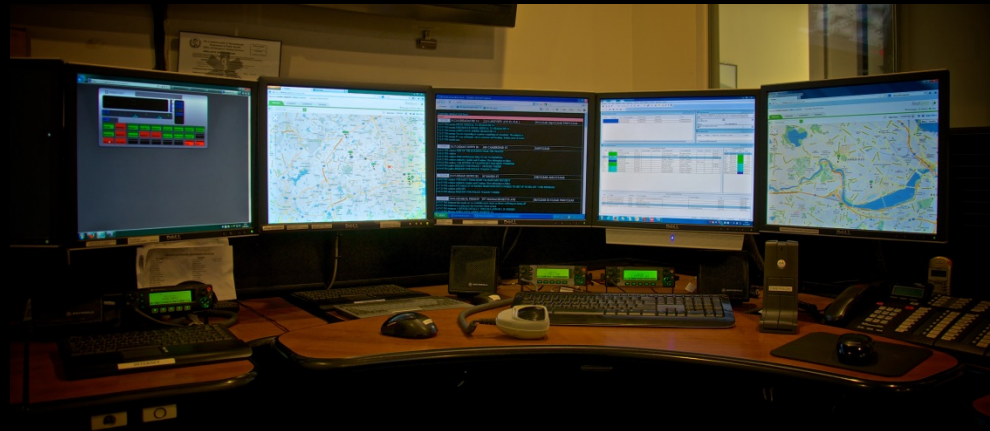


Public Safety

SAMSUNG

In Field | Smartphones

1. Smartphones can function as a CAD-enabled device
2. GeoLocation information is person, not vehicle
3. Improves efficiency and enhances situational awareness
4. Allows a greater level of community engagement
5. Integration with Records Management Systems & eCitations



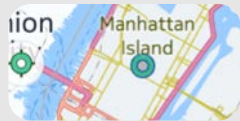
In Field | Wearables

- Samsung Gear S3 connects independently with LTE and WiFi, tethers with Bluetooth
- Concise and timely info at a glance.
- Haptic feedback delivers discrete notification
- Can activate or control devices, e.g. Body Worn Cameras
- Apps can be configured and customized to prevent info overload
- Option of single touch duress notification
- Situational awareness potential through geolocation, heart rate monitor, accelerometer, gyroscope and other sensors.
- Supported and protected by Knox.



In Field | Galaxy Watch

Notify



- Emergency medical assistance with simple click
- With built-in GPS: locate, alert and request for assistance

Support



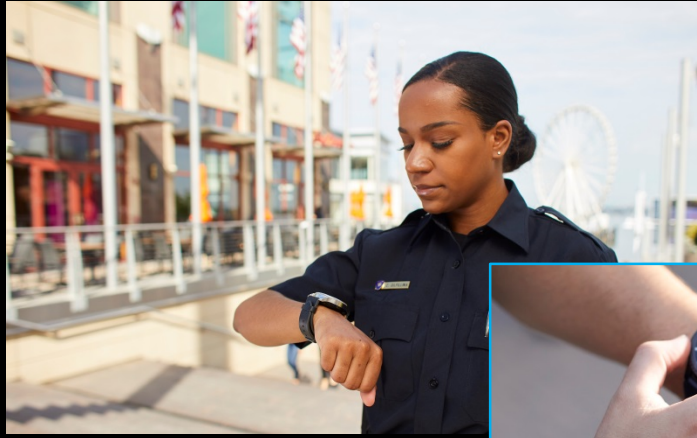
- Alert condition/unusual patterns
- Update conditions that change
- Order and strategize with quick interaction

Manual/Automated SOS



- Automated SOS based on sensory activity (e.g. bulletproof vest)

Public Safety | Wearable CAD Integration



TriTech Wearable Integration | CAD

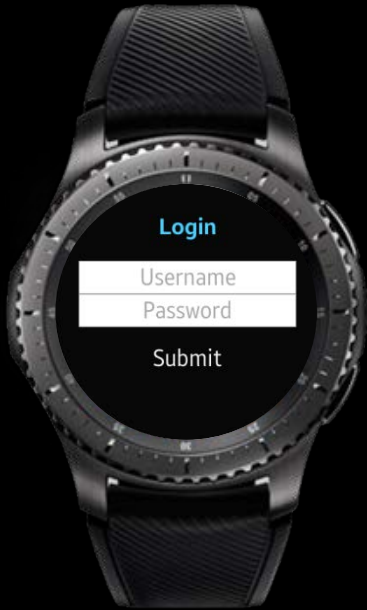


Gear S3 – Frontier

Public Safety

SAMSUNG

Tyler Technologies Wearable Integration | CAD



CAD Login



Authentication



Unit Selection



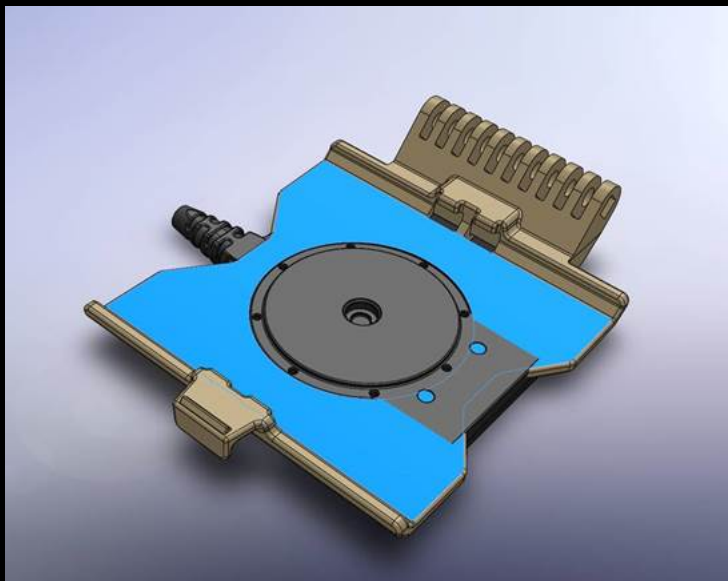
Dispatch Call

Gear S3 – Frontier

Public Safety

SAMSUNG

Visual Labs | Body Worn Camera Mount Prototype (Juggernaut)



Inductive Charge Unit



Tactical Vest Mounting

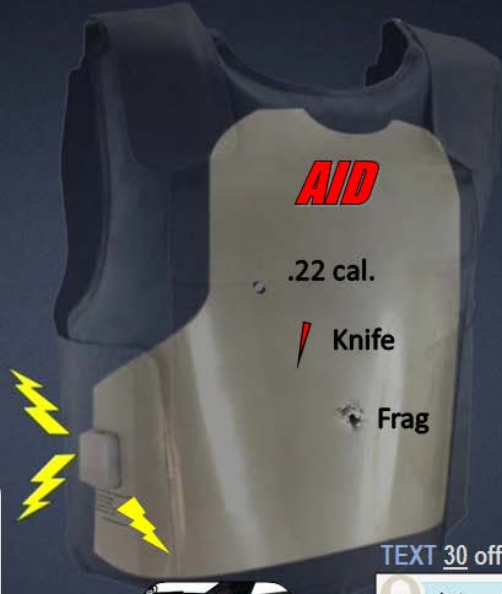
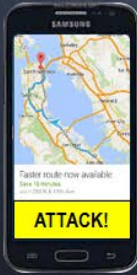
Select Engineering Integration | Injury Detection

SES AID AUTOMATIC INJURY DETECTION



AGENCY WIDE ALERTS IN SECONDS! NO USER INPUT

- Injuries, Blood Type, Allergies, etc.
- Opens Mic to "listen in"
- Starts Video Camera
- Sends "Heart Rate" Gear 3
- Radio / Cell / MDT
- No tracking until attack



MAP LINK

TEXT 30 officers at Once

Automated message:
Lt. Dan, blood type O
+ has been injured:
chest, lower back, <http://maps.google.com/?ie=UTF8&q=Officer@38.879262;-77.034204>

Personal Emergency Transmitter (PET)





Thank You!

Public Safety

SAMSUNG