

2022 Regional Lahar Evacuation Exercise

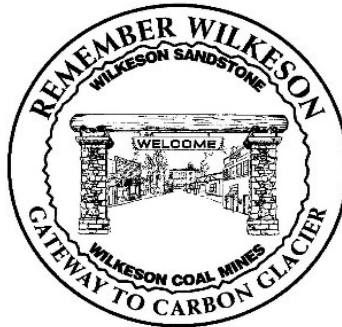
Kirstin Hofmann
Emergency Management
City of Puyallup

Mount Rainier as seen from the crater rim of Mount St. Helens, overlooking Spirit Lake

USGS Photo



East Pierce Interlocal Coalition for Emergency Management (EPIC-EM)



EPIC-EM

- Seven jurisdictions entered into an Interlocal agreement for emergency management preparedness, planning, training and exercise (February 2021)
- The Coalition has a multi-year work plan that prioritizes the Coalition's efforts
- Recently completed the East Pierce County Lahar Rapid Action Plan (RAP)
- Currently completing the Coalition's Continuity of Operations (COOP) plans
- Next regional planning process will be the Comprehensive Emergency Management Plan (CEMP)



EPIC-EM

- Jurisdiction shelter and mass care plans
 - “Puyallup Chill Out 2021”, full-scale shelter exercise, conducted on October 12, 2021
- Alert and Warning – CodeRED implementation
- Training and Exercise opportunities for the region



EPIC Emergency Management Portal

Search for data



The mission of EPIC (East Pierce Interlocal Coalition) is to protect lives and property through preparedness and mitigation activities. It develops and refines emergency preparedness and recovery.

Volcanic Lahar

- Lahar is an Indonesian word describing a mudflow or debris flow that originates on the slopes of a volcano
- Lahars can occur with or without a volcanic eruption

Photo Credit: USGS



East Pierce County
Lahar Rapid Action
Plan (RAP)



East Pierce County Lahar Rapid Action Plan (RAP)

- Designed for first responders in the immediately impacted areas of an incoming no-notice or short-notice (also referred to as unheralded) lahar from Mount Rainier
- Includes a Critical Action Guide section as well as Rapid Action Procedures (RAP) for each first responder agency
- Developed by a multi-jurisdictional, multi-discipline planning team

Regional Lahar Evacuation Exercise, April 29, 2022

1. Provide for the safety and accountability of all participants and responders throughout the East Pierce Regional Lahar Evacuation Exercise
2. Maintain traffic control and safe travels for all students and staff
3. Utilize the East Pierce School Evacuation Dashboard (GIS resource) throughout the duration of the exercise
4. Familiarize students with the evacuation routes and provide them with the tools to be prepared for a real-life lahar evacuation

Regional Lahar Evacuation Exercise, April 29, 2022

- Jurisdictions included Puyallup, Sumner, Orting, Bonney Lake, Buckley, Carbonado and Wilkeson
- School Districts included the Puyallup School District, Sumner-Bonney Lake School District, Orting School District, White River School District, Carbonado Historical School District
- The Puyallup EOC, Bonney Lake EOC and the Buckley EOC activated in support of the exercise

Regional Lahar Evacuation Exercise, April 29, 2022

- Over 40 schools participated
- Approximately 14,500 students and staff practiced their walking evacuation routes
- Approximately 11,500 students and staff practiced their shelter in place procedures
- 3 Emergency Operations Center with a combined total of over 120 EOC participants participated
- Over 100 first responders, jurisdiction staff and other personnel assisted the schools with the drill

2022 EPIC School Lahar Evacuation Exercise

Filter:
All School Districts

Schools Evacuated



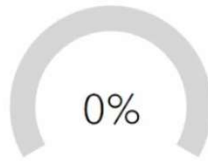
Last update: a few seconds ago

Sheltered In Place



Last update: a few seconds ago

Exercise Complete



Last update: a few seconds ago

Evacuating

- Not Started: All Saints School - Puyallup
- Not Started: Aylen Junior High School
- Not Started: Carbonado Historic School
- Not Started: Cascade Christian Jr High and High School
- Not Started: Cascade Christian School - Puyallup Elementary
- Not Started: Cornerstone Montessori
- Not Started: Daffodil Valley Elementary School
- Not Started: Elhi High School
- Not Started: Kalles Junior High School
- Not Started:

Sheltering In Place

- Not Started: Bonney Lake Elementary School
- Not Started: Bonney Lake High School
- Not Started: Crestwood Elementary School
- Not Started: Donald Eismann Elementary School
- Not Started: Elk Ridge Elementary School
- Not Started: Emerald Hills Elementary School

Total Participating

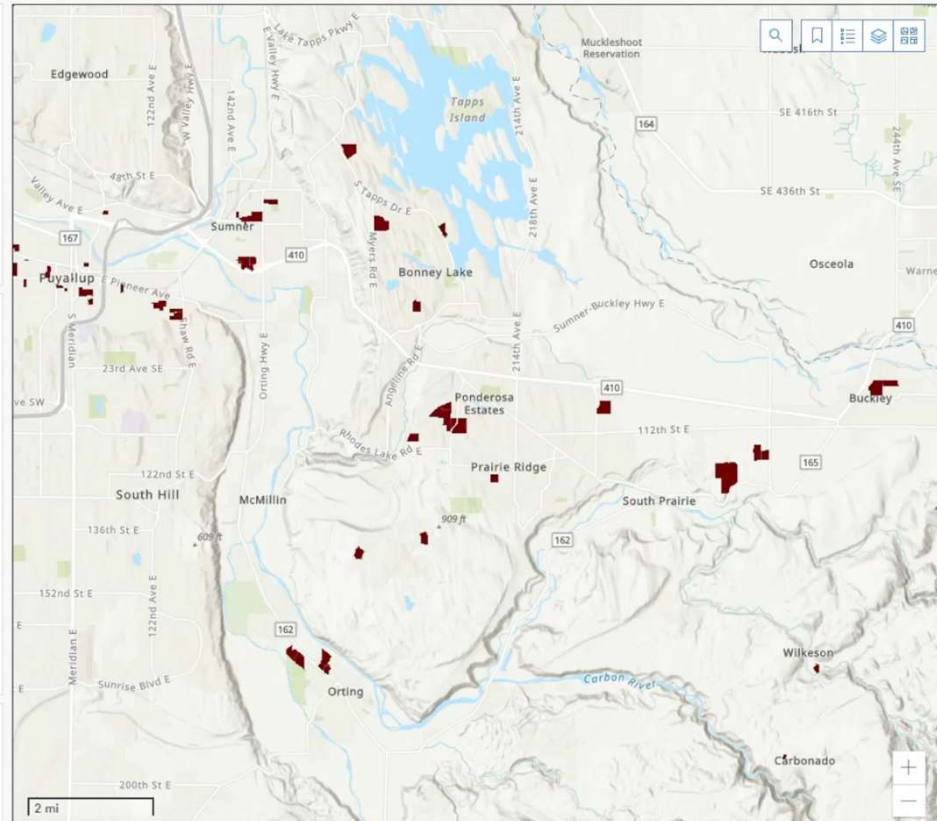
25,864

Returning / Complete

No Schools reporting as "Returning to School"

Live Drone Feeds:

- Feed 1 - PPD
- Feed 2
- Feed 3
- Feed 4



Esri, NASA, NGA, USGS | King County, WA State Parks GIS, Esri, HERE, Garmin, SafeGraph, GeoTechnologies, Inc, METI/NASA, USGS, Bureau of L... Powered by Esri

8:30 AM
1/20/2022

2022 EPIC School Lahar Evacuation Exercise

Filter:
All School Districts

Schools Evacuated



Last update: a few seconds ago

Sheltered In Place



Last update: a few seconds ago

Exercise Complete



Last update: a few seconds ago

Evacuating

- Not Started: All Saints School - Puyallup
- Not Started: Aylen Junior High School
- Not Started: Carbonado Historic School
- Not Started: Cascade Christian Jr High and High School
- Not Started: Cascade Christian School - Puyallup Elementary
- Not Started: Cornerstone Montessori
- Not Started: Daffodil Valley Elementary School
- Not Started: Elhi High School
- Not Started: Kalles Junior High School
- Not Started:

Sheltering In Place

- Not Started: Bonney Lake Elementary School
- Not Started: Bonney Lake High School
- Not Started: Crestwood Elementary School
- Not Started: Donald Eismann Elementary School
- Not Started: Elk Ridge Elementary School
- Not Started: Emerald Hills Elementary School

Total Participating

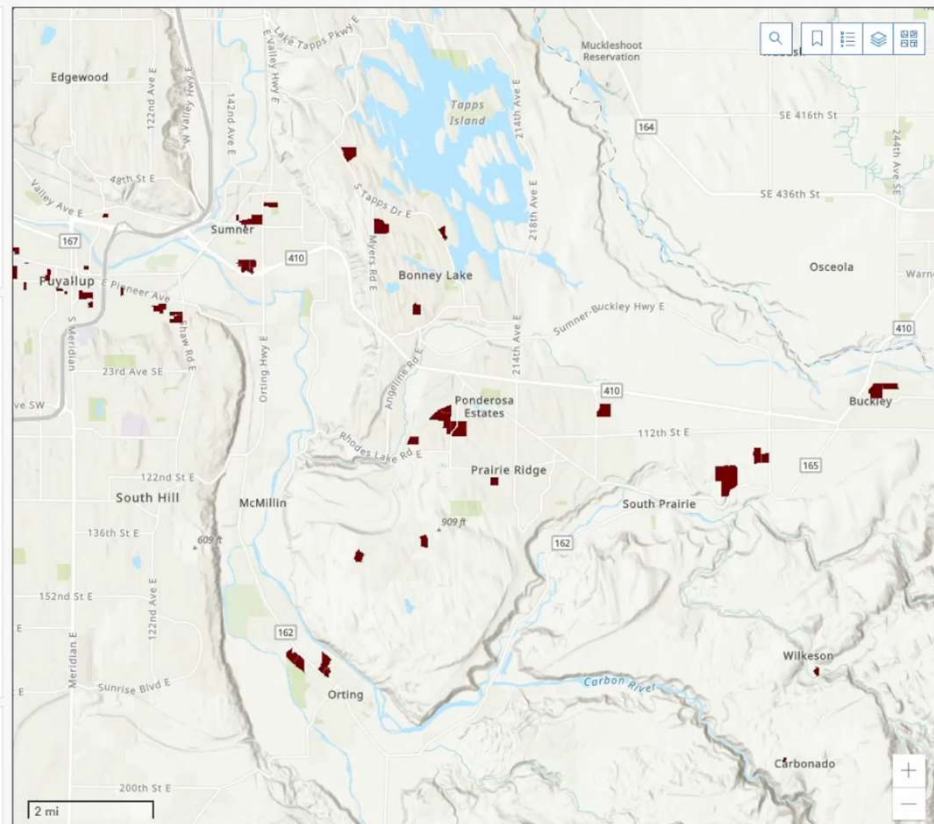
25,864

Returning / Complete

No Schools reporting as "Returning to School"

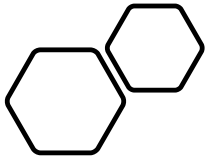
Live Drone Feeds:

- Feed 1 - PPD
- Feed 2
- Feed 3
- Feed 4



Esri, NASA, NGA, USGS | King County, WA State Parks GIS, Esri, HERE, Garmin, SafeGraph, GeoTechnologies, Inc, METI/NASA, USGS, Bureau of L... Powered by Esri

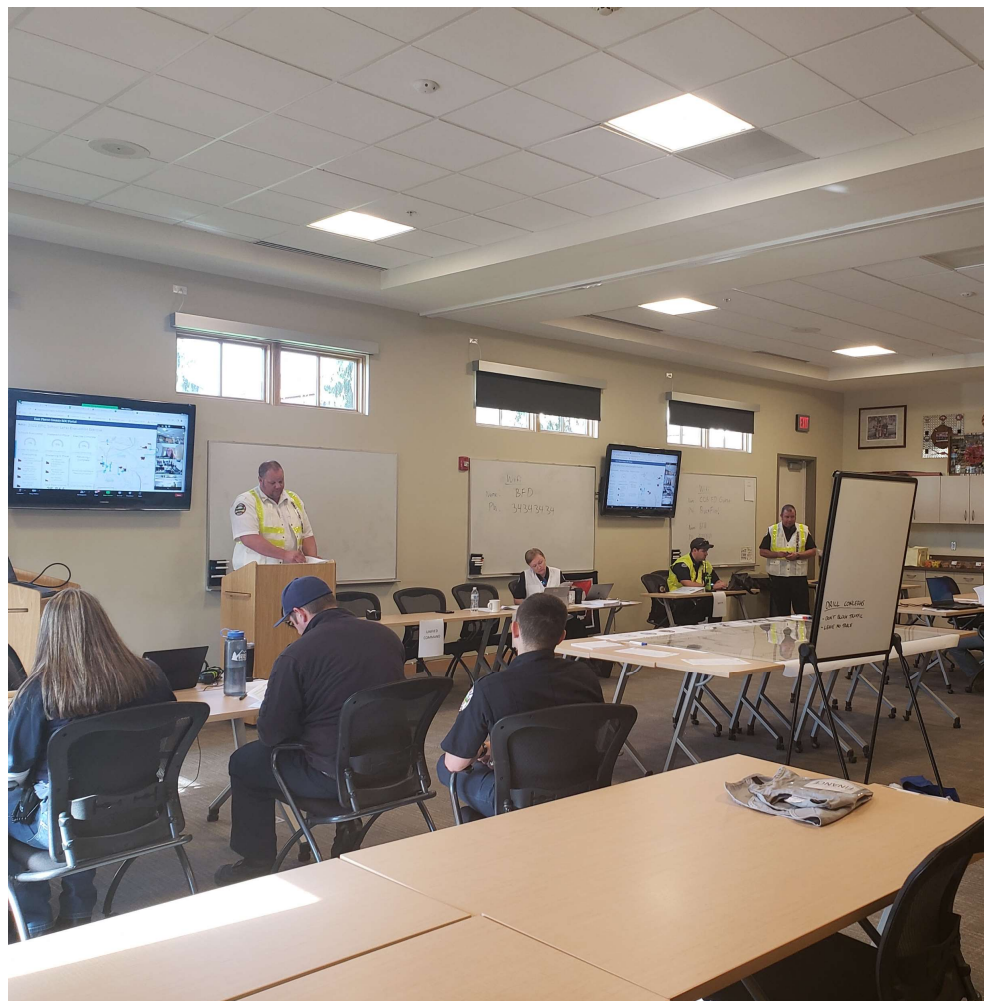
8:30 AM
1/20/2022



Puyallup EOC



Buckley Emergency Operations Center



Bonney Lake Emergency Operations Center





Pierce County Emergency Management Dashboard

Fire

Volcanic

Crime & Safety

Volcanic Monitoring

No active messages at this time.

Last updated: 1/18/2022



Last Rainier Eruption:

1894

Rainier Alert Level:

NORMAL

Volcano Alert Level:

• Normal/Green
typical background
events, thermal

Regional Lahar Evacuation Routes

- Coordinated regionally
- All first responders in the impacted area will know what actions to take immediately upon notification of an incoming lahar
- All residents in the impacted jurisdictions will know what routes to use (vehicular and walking) and where to go (evacuation locations)

Questions?

Kirstin Hofmann

(253) 841-5400

khofmann@puyallupwa.gov



Lectures & Webinars

The Great Washington Shake Out

Mobile Apps

Dashboards

National Preparedness Month

FEMA Shelter-in-Place


FEMA National Risk Index for Natural Hazards

Home > Government > Departments > Emergency Management > Personal Preparedness

Preparing for Disasters

Disaster can strike quickly and without warning. It can force you to evacuate your neighborhood or confine you to your home. Individuals and families can - and do - cope with disaster by preparing in advance and working together as a team. The following resources may help you in preparation for an emergency.

Create a Disaster Plan



- Discuss the types of disasters that are most likely to happen. Explain what to do in each case.
- Pick two places to meet. One right outside your home in case of a sudden emergency, like a fire. The other, outside your