



Washington Military Department  
**Emergency Management Division**

# Disaster Communications and Coordination

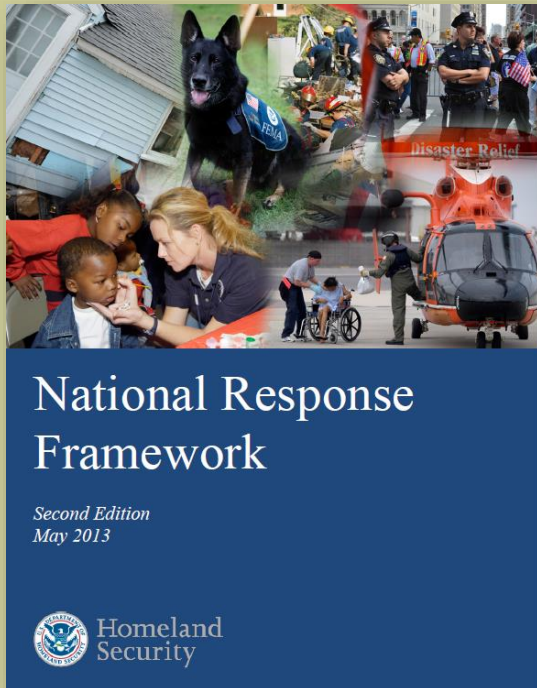
January 22<sup>nd</sup>, 2015

Robert Ezelle, Director  
Emergency Management Division  
Washington Military Department



# Washington Military Department Emergency Management Division

## National Response Framework (NRF)

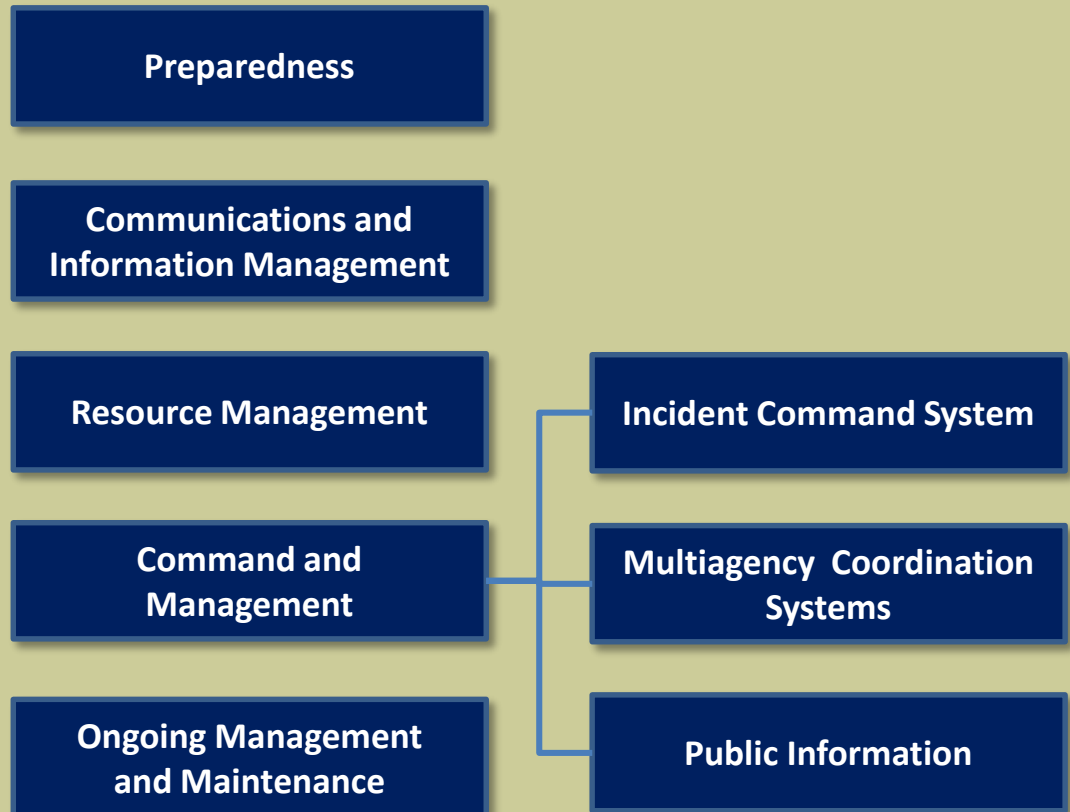
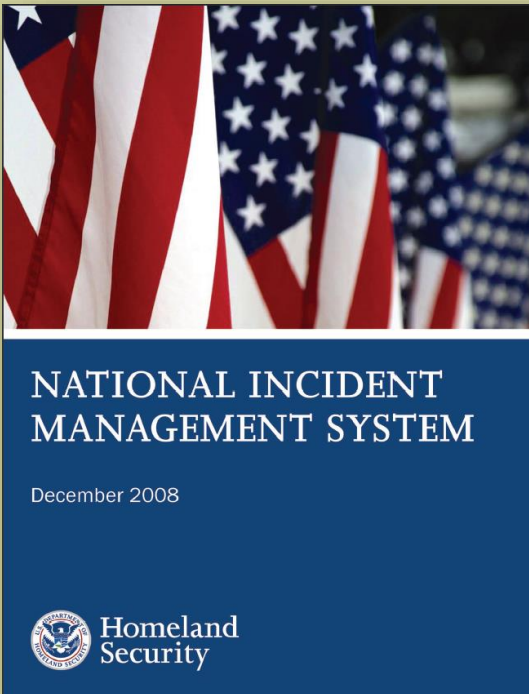


Capabilities necessary to save lives, protect property and the environment, meet basic human needs, stabilize the incident, restore basic services and community functionality, and establish a safe and secure environment moving toward the transition to recovery



# Washington Military Department Emergency Management Division

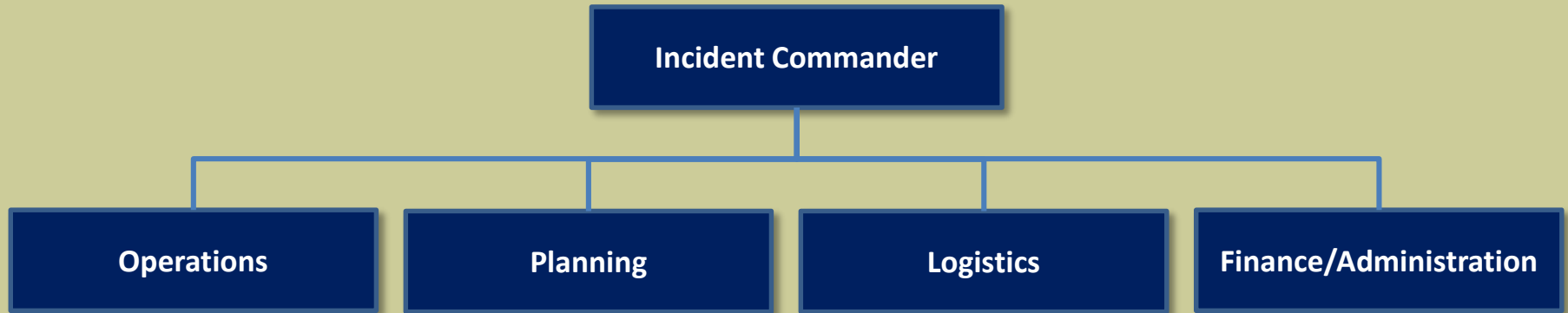
## National Incident Management System (NIMS)





# Washington Military Department Emergency Management Division

## Incident Command System (ICS)



- Common terminology
- Chain of command
- Unity of command
- Management by objectives
- Scalable, modular organization
- Manageable span of control
- Comprehensive resource management
- Integrated communications
- Accountability



# Washington Military Department Emergency Management Division

## First Responders

- ❑ Law Enforcement, Fire Service, Emergency Medical Service
- ❑ Incident Command, Unified Command
- ❑ Mutual Aid Agreements
- ❑ Complexity Analysis
- ❑ State Fire Service Resource Mobilization
- ❑ Type III, II, or I Incident Management Team





# Washington Military Department Emergency Management Division

## Local Jurisdictions

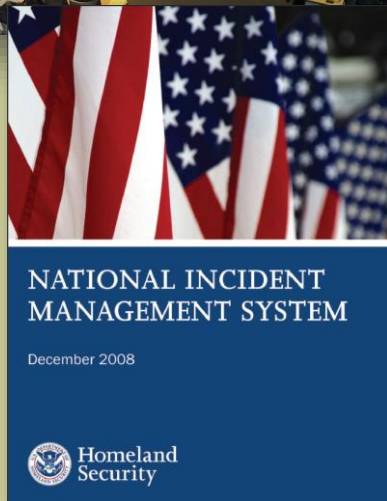


- ❑ Emergency Managers
  - ❑ Emergency Management Plans
  - ❑ Emergency Operations Center
  - ❑ Washington Intrastate Mutual Aid System
- ❑ Elected Officials
  - ❑ Strategic guidance, policies, budget
  - ❑ Declaration of Emergency
  - ❑ Delegation of Authority



# Washington Military Department Emergency Management Division

## State Emergency Operations Center

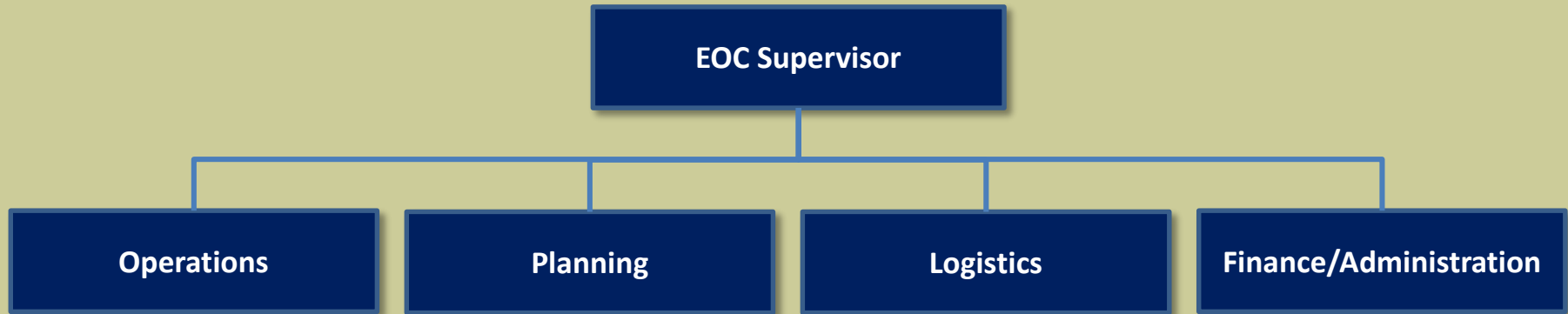


- Always Activated
  - Phase I – Normal Operations
  - Phase II – Enhanced Operations
  - Phase III – Full Activation
  - Phase IV – Catastrophic Activation
- Organization
  - National Incident Management System
  - Incident Command System
  - Emergency Support Functions



# Washington Military Department Emergency Management Division

## State Emergency Operations Center



**ESF 1 – Transportation – WSDOT**

**ESF 2 – Communications – MIL**

**ESF 3 – Public Works & Engineering – DES**

**ESF 4 – Firefighting – DNR, WSP**

**ESF 5 – Emergency Management – MIL**

**ESF 6 – Mass Care & Human Services – DSHS**

**ESF 7 – Resources Support– DES**

**ESF 8 – Public Health & Medical Services – DOH**

**ESF 9 – Search and Rescue– MIL**

**ESF 10 – Hazardous Materials – ECY**

**ESF 11 – Agriculture & Natural Resources – WSDA**

**ESF 12 – Energy – Commerce**

**ESF 13 – Public Safety – WSP**

**ESF 14 – Long-term Recovery – MIL, Commerce**

**ESF 15 – External Affairs – MIL**

**ESF 20 – Defense Support to Civil Authorities – MIL**





## State Emergency Operations Center

- ❑ **Resource Requests**
  - ❑ **State Resources**
  - ❑ **Private Sector, Non-governmental Organizations**
  - ❑ **Interstate/International Mutual Aid: EMAC, PNEMA**
  - ❑ **Request for federal assistance**
- ❑ **Governor's Emergency Proclamation**
  - ❑ **Invoke Governor's Emergency Powers**
  - ❑ **Access federal funds**
  - ❑ **Request interstate mutual aid through EMAC**
  - ❑ **Apply for a Presidential Declaration**



## **Federal Assistance: Stafford Act**

- ❑ Governor's Request**
  - ❑ State Emergency Management Plan executed**
  - ❑ Estimate of amount/severity of damages/losses**
  - ❑ State and local resources committed to the disaster**
  - ❑ Type and extent of federal assistance needed**
- ❑ Presidential Declarations and Commitments**
  - ❑ Emergency Declaration**
  - ❑ Major Disaster Declaration**
  - ❑ Fire Management Assistance Grants**



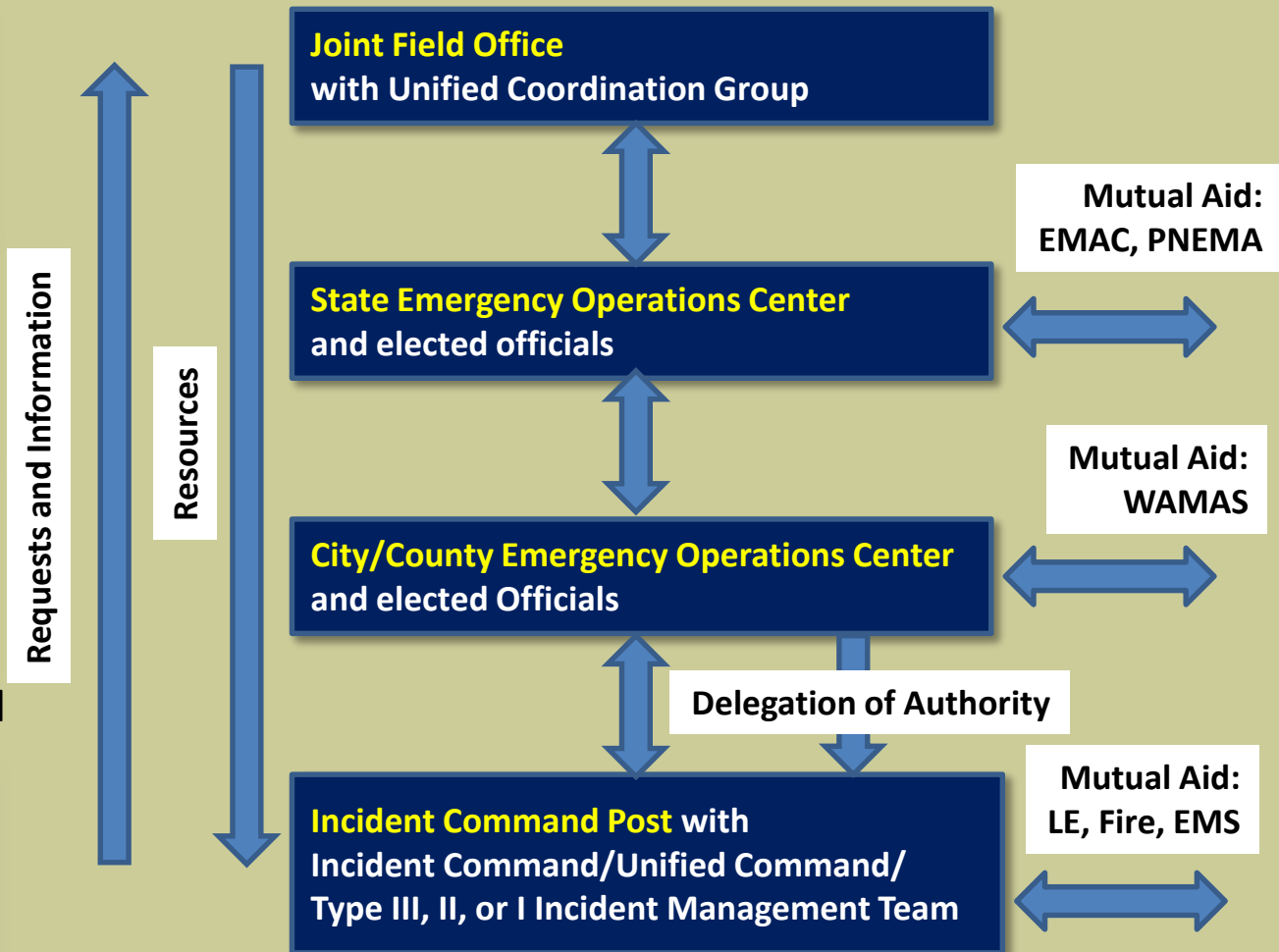
# Washington Military Department Emergency Management Division

## Emergency Management Across All Levels of Government

Off-scene Coordination



On-scene Command





Washington Military Department  
**Emergency Management Division**

**QUESTIONS?**