



Catastrophic Incident Planning for Cascadia Subduction Zone

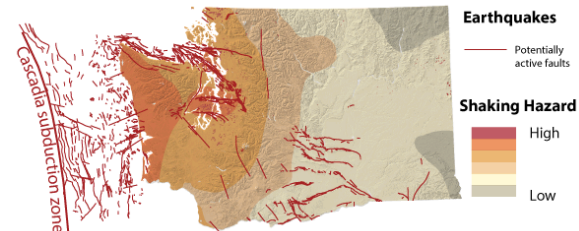
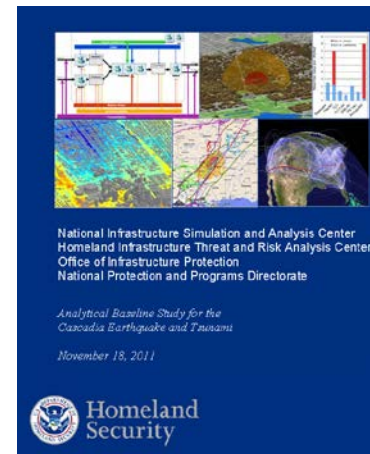
EMC

February 2019



Scenario

- **Science-based efforts** drives planning and exercises efforts for scenarios and planning assumptions:
 - Risk assessments:
 - HITRAC
 - HAZUS for earthquakes and tsunamis
 - M9 tsunami modeling
 - Collaboration effort between Emergency Management Division, Department of Natural Resources, National Guard, FEMA, USGS, UW, and others.





The State Catastrophic Incident Planning Team

- The mission of the SCIPT is to facilitate collaborative engagement between state, tribal, and local governments, together with the communities they serve, in developing plans to prepare for, respond to, and recover from catastrophic incidents.
- The State Catastrophic Incident Planning Team (SCIPT), made up of local government and state agencies representatives





WA State Catastrophic Incident Planning Framework

- The Catastrophic Incident Planning Framework (Framework) that can be used by local, tribal, and state agency partners to develop their catastrophic plans.
- Focuses on **life-saving** and **life sustaining** strategies including: Critical Transportation, Mass Care Services, Public Health, Healthcare, EMS, Mortuary Services, and Utilities Restoration with emphasis on Energy, Water and Waste Water, and Information Communications Technologies.
- Core capabilities were identified that require integrated planning for each strategy that include: Operational Coordination, Operational Communication, Situational Assessment, and Logistics and Supply Chain Management.
- Within each core capability, critical tasks are identified by:
 - State and local responsibilities
 - FEMA Region X's Cascadia Subduction Zone incident phases



CATASTROPHIC INCIDENT PLANNING FRAMEWORK

Statewide Catastrophic Incident Planning Team

An emergency planning framework to prepare for a catastrophic incident affecting Washington State, and the tribal nations, counties, cities, and towns therein.

https://mil.wa.gov/uploads/pdf/emergency-management/catastrophic-incident-planning-framework_version-1_101217.pdf



Core Capabilities and Strategies

Core Capabilities

- Logistics and Supply Chain Management
- Operational Communication
- Operational Coordination
- Situational Assessment

Strategies

- Critical Transportation
- Mass Care
- Planning
- Public Health, Healthcare, Emergency Medical Services, and Mortuary Services
- Utilities Restoration: Energy, Water & Wastewater, and Information Communications Technologies



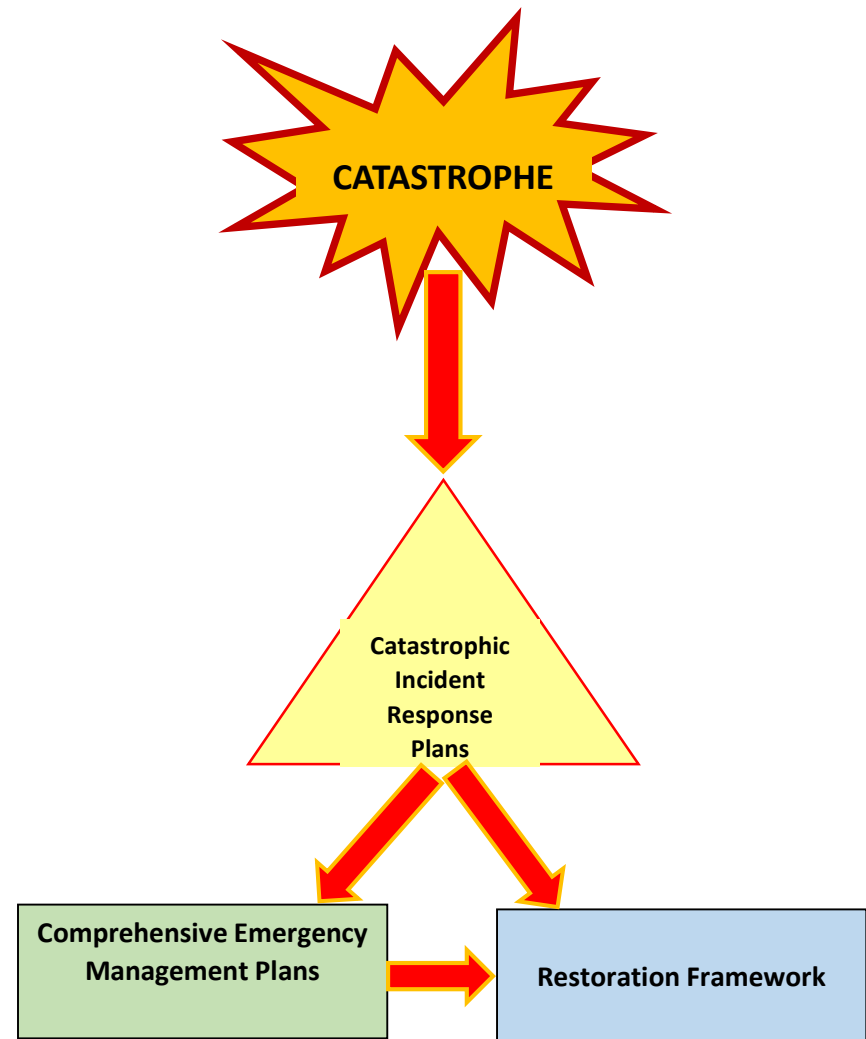
Statewide Planning

- The Catastrophic Incident Annex to the state CEMP will:
 - Focus on state level roles, responsibility, and coordination through the critical tasks identified in the Catastrophic Incident Planning Framework.
 - Expand upon critical tasks by providing detail.
 - Identify essential elements of information (EIs) that will be used during a response to a catastrophic incident.
- State Agency/ESF/Local/Tribal Plans will:
 - Focus on the agency's/ESF's/organization's role, responsibilities, and coordination through the critical tasks identified in the Framework.
 - Expand upon critical tasks by providing agency specific detail.
 - Identify gaps, and essential elements of information that will be used during a response to a catastrophic incident.



Current Statewide Catastrophic Incident Planning Efforts

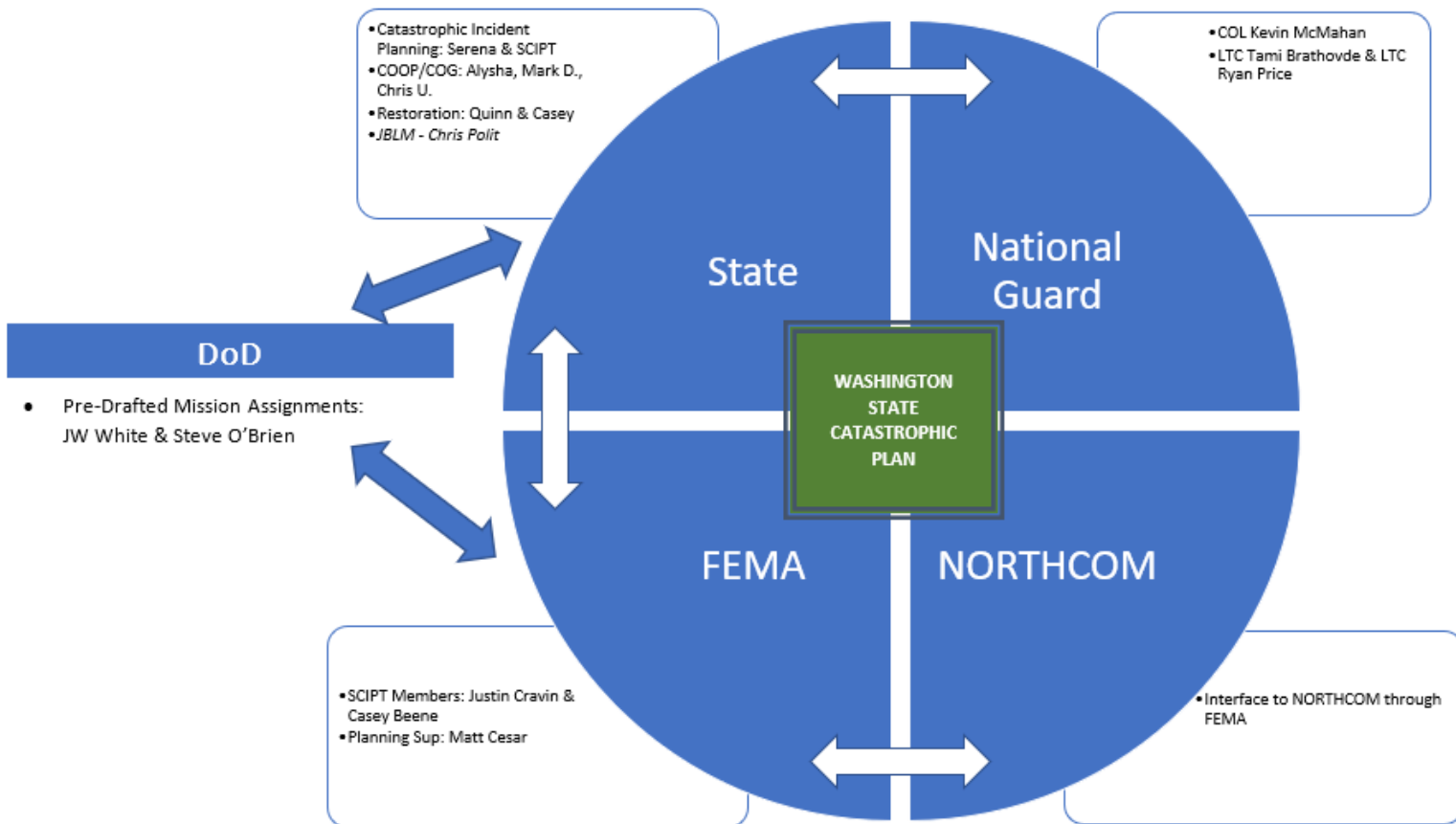
- The goal of the catastrophic incident plan is not to return to the pre-incident conditions, but rather to reduce the level of the incident to allow all aspects of state and local response to be based upon the state and local CEMPs and the state Restoration Framework
- Coordinated planning at all levels of government / private sector in support of life-saving and live sustaining strategies.





Road Map of Current Catastrophic Incident Efforts

WASHINGTON STATE CATASTROPHIC INCIDENT PLAN





Road Map of Current Catastrophic Incident Efforts

• Planning efforts:

- Statewide Catastrophic Incident Planning Team (SCIPT):
 - Catastrophic Incident Planning Framework version 1.0
 - Local jurisdictions and tribal CEMPs include catastrophic incident planning
 - Road shows conducted by the National Guard using the Catastrophic Incident Planning Worksheet that operationalizes the Catastrophic Incident Planning Framework
- Catastrophic Incident Annex to the state CEMP
- Integration and collaboration of federal and state plans, and with Region X, California, and Canada BC plans
- Outreach efforts for planning: WSDOT Aviation, Washington National Guard, EMD Logistics, and the SCIPT





Critical Transportation

Objective: Provide transportation (including infrastructure access and accessible transportation services) for response priority objectives, including the evacuation of people and animals, and the delivery of vital response personnel, equipment, and services to the affected area.

Critical Tasks:

- Establish physical access through appropriate transportation corridors and deliver required resources to save lives and to meet the needs of disaster survivors.
- Ensure basic human needs are met, stabilize the incident, transition into recovery for an affected area, and restore basic services and community functionality.



Critical Transportation Outreach Goals

- Identify Critical Transportation Infrastructure required to support Life-Saving and Live-Saving response and recovery activities post catastrophic incident
- Prioritize critical infrastructure
- Understand the effect a CSZ incident will have on local Critical Transportation Infrastructure
- Understand state and local roles and responsibilities





Next Steps

- Critical Transportation Outreach
 - Get answers to the Critical Transportation Survey
 - Introduce the topic to the HLS Regions
 - Kick-start local planning / coordination at the local level
- Aviation Outreach
 - Have the tools, knowledge, and support to work towards completing or updating local catastrophic incident plans that are inclusive of general aviation and public airports.



Contact Information

Serena Segura
Catastrophic Planner
Emergency Management Division
Washington Military Department
253-512-7021
serena.segura@mil.wa.gov

Michael Roberson
Planning Supervisor / SCRIPT Co-
Chair
Emergency Management Division
Washington Military Department
253-625-3943
michael.roberson@mil.wa.gov

Jason Bierman
Director / SCRIPT Co-Chair
Snohomish County
Department of Emergency
Management
425-754-2679
Jason.Biermann@co.snohomish.wa.us