



EMERGENCY MANAGEMENT INFORMATION PORTALS

Washington Military Department
Emergency Management Division
Private Sector & Infrastructure Program

Brief overview of tools used to track emergency response information. Various levels of government use these tools to plan for, respond to and recover from disasters.

Contents

Geospatial Tools for Situational Awareness	2
Infrastructure Protection (IP) Gateway.....	3
Eagle-I.....	4
Washington State Energy Disruption Tracking (WSEDT)	5
Washington Information Sharing Environment (WISE)	6
National Interagency Fire Enterprise Geospatial Portal (Fire EGP)	7
Washington Geologic Information Portal	8
Incident Management Platforms.....	9
WebEOC	10
Northwest Interagency Coordination Center (NWCC):.....	11
Information Sharing Networks	12
Homeland Security Information Network (HSIN)	13
InfraGard	14
Northwest Warning, Alert & Response Network (NW WARN).....	15
FEMA National Business Emergency Operations Center (NBEOC)	16
Seattle / King County Business Emergency Operations Center (BEOC).....	17

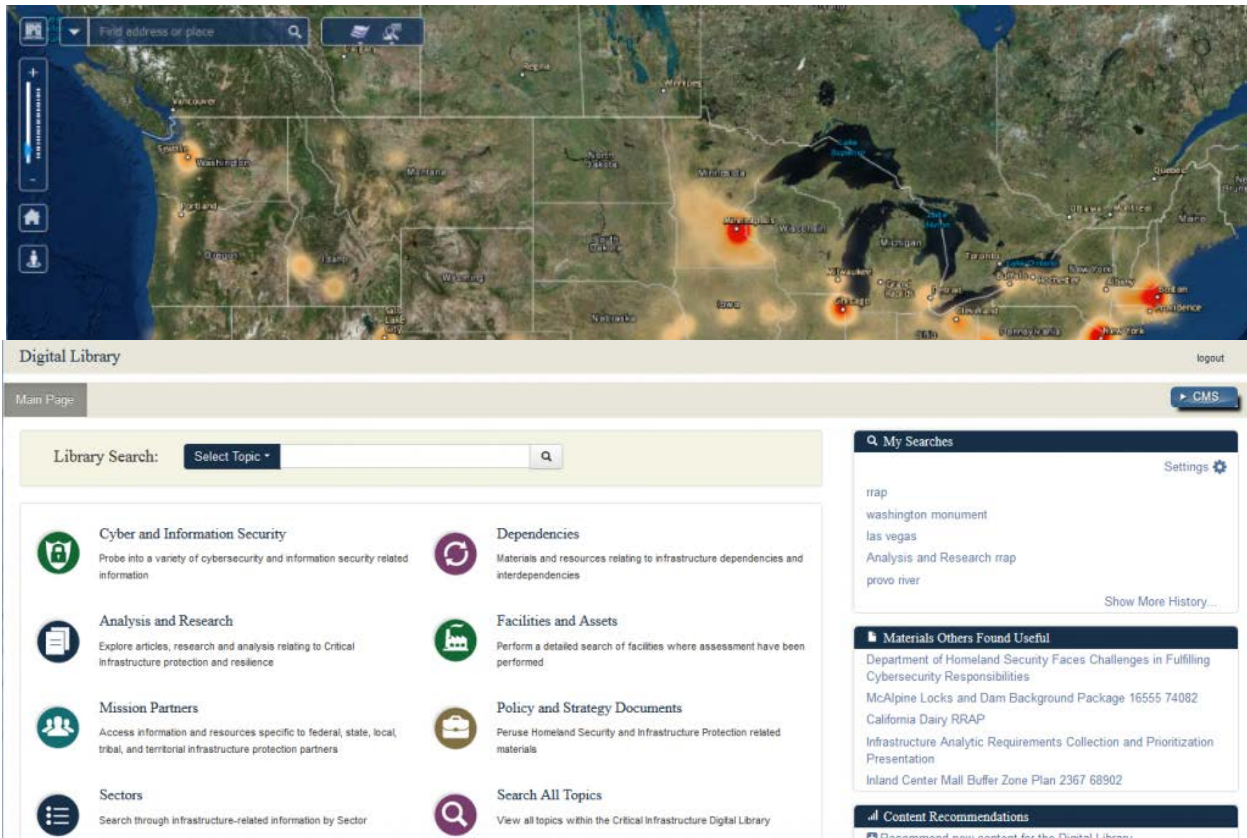
Disclaimer: The content of this document is the subjective analysis of current capabilities by the Washington Military Department, Emergency Management Division Private Sector & Infrastructure Program. It is not an official user guide for any system, nor is it a review of any software, website or organization. It is not an endorsement of any kind. The content of this document is subject to change based on updates to improve the accuracy of the information.

Geospatial Tools for Situational Awareness

The following tools map data relating to infrastructure locations, emergency response operations, or both. These maps are interactive and generally include:

- Dynamic data feeds (i.e. information that changes based on input from a live source)
- Static data sets (i.e. information uploaded that generally will not change)
- User input data (i.e. information input through the systems user interface, like lines drawn around an active incident area, or an icon created to represent a given point of interest. Subject matter experts or incident management personnel generally input this information).

Infrastructure Protection (IP) Gateway



Owner/Lead Agency: Federal Department of Homeland Security (Office of Infrastructure Protection)

Description: Federal repository for critical infrastructure information including individual facilities with corresponding assessments, analytical products and reports. Not a tool for public-private information sharing. Designed to receive information about public and private sector facilities to inform government decision makers and first responders.

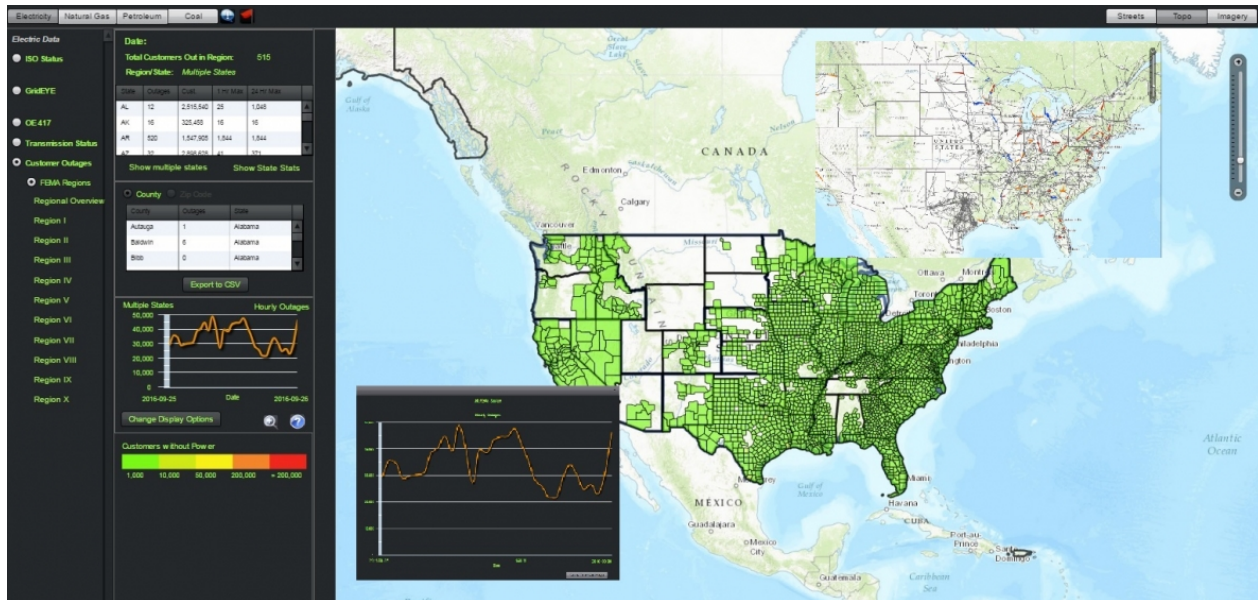
Portal Characteristics:

- Database of critical infrastructure facilities across the nation
- Geospatial visualizations with multiple layers for sorting and viewing data
- Dependency mapper that shows infrastructure dependencies between facilities
- Events and Incident Tracker for managing pre-planned events or disasters
- Digital library with information on infrastructure sectors, policy & strategy documents, cyber information, among other topics.

Information Sensitivity: Protected Critical Infrastructure Information (PCII). Government only access through the Department of Homeland Security.

URL: <https://www.dhs.gov/ipgateway>

Eagle-I



Owner/Lead Agency: Federal Department of Energy (Oak Ridge National Laboratory)

Description: Federal power outage tracking system designed to provide a high-level overview of the status of the country's electric grid. Not a tool for public-private information sharing. Designed to receive information about public and private sector facilities to inform government decision makers and first responders.

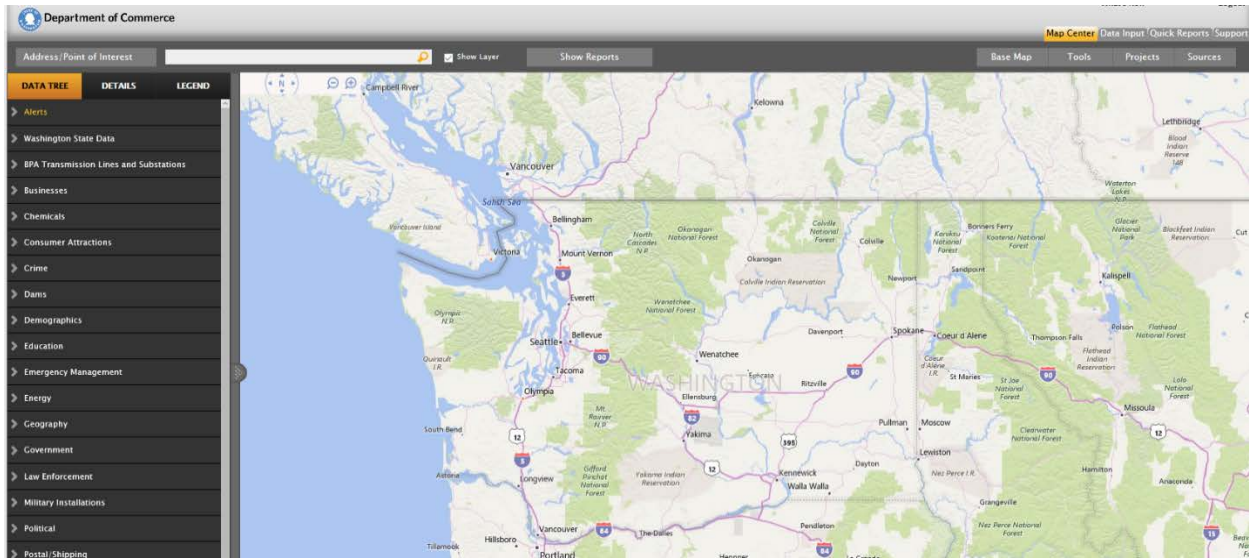
Portal Characteristics:

- Geospatial portal tracking power grid status
- Tracks transmission line status and customer outage numbers by county, state, and FEMA region
- Expanding to include hazard overlays to identify risk to the electric grid, petroleum and natural gas infrastructure

Information Sensitivity: For Official Use Only (FOUO). Government only access through the federal Department of Energy

URL: <https://eagle-i.doe.gov>

Washington State Energy Disruption Tracking (WSED)



Owner/Lead Agency: Planet Risk, Inc. / Washington State Department of Commerce (State Energy Office)

Description: Geospatial portal, with corresponding analysis and reports, designed for tracking and managing the effects of disasters on energy infrastructure. Serves as the primary tool for the Emergency Support Function (ESF) 12 when the WA State Emergency Operations Center (SEOC) activates in response to a disaster. Not currently utilized as a tool for public-private information sharing. Designed to receive information about public and private sector facilities to inform government decision makers and first responders.

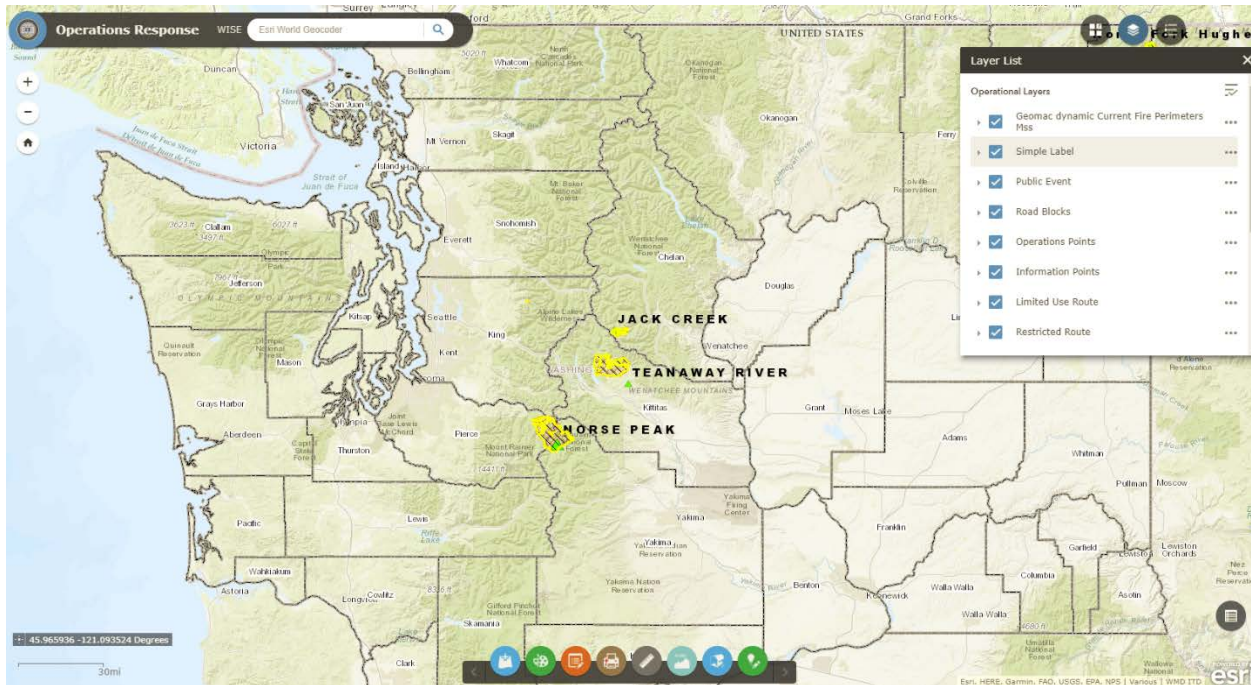
Portal Characteristics:

- Geospatial portal tracking infrastructure facility locations
- Some data is a live feed from facility owner/operators, some data is a static upload
- Feature for managing a disaster and producing supporting documents
- Requires an end user to manually update data during a response

Information Sensitivity: For Official Use Only (FOUO). Government only access through the Washington State Department of Commerce.

URL: www.planetrisk.com

Washington Information Sharing Environment (WISE)



Owner/Lead Agency: Washington Military Department, Emergency Management Division

Description: Geospatial portal that aggregates all relevant data layers for emergency management in the state of Washington. Administered by the Military Department, this tool is the primary visualization tool used in the WA State Emergency Operations Center (SEOC) to visualize all information relating to response operations. Private sector account credentials and data layers can facilitate public-private information sharing.

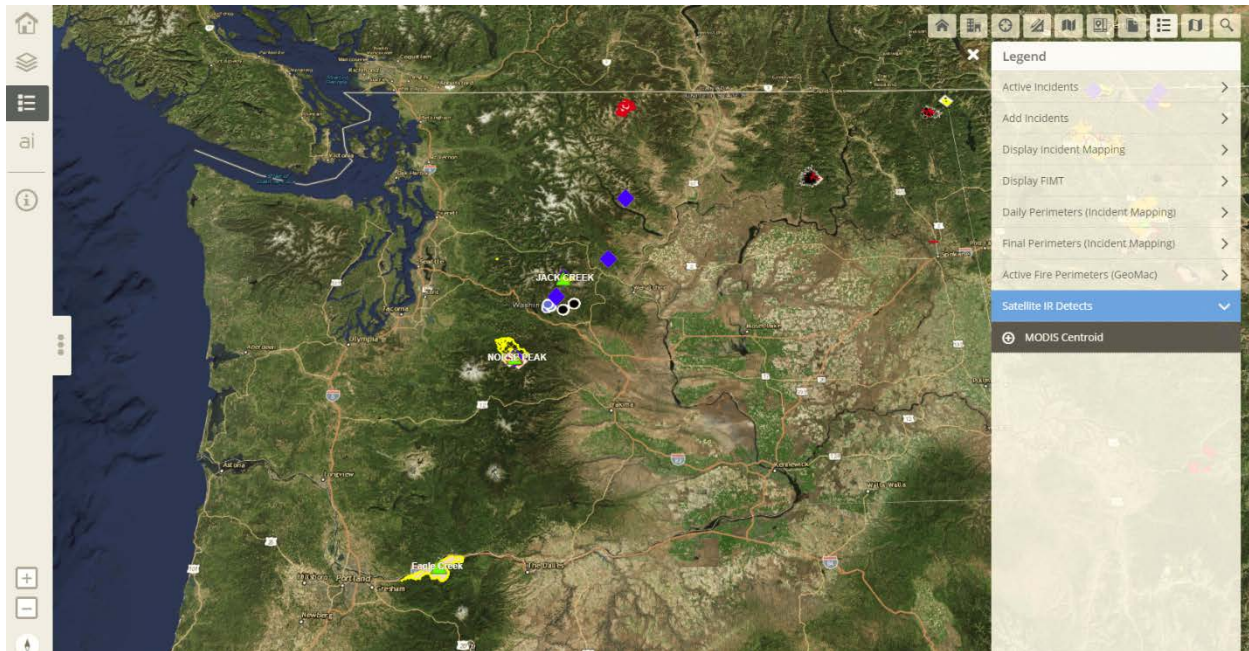
Portal Characteristics:

- Built on ESRI ArcGIS software platform
- Geospatial portal with a wide range of layers that include geography, hazards, infrastructure, and population
- Tied into WebEOC mapping function

Information Sensitivity: Publicly available. Some portions are For Official Use Only (FOUO)

URL: <https://wise.wamil.us/wmd/home/>

National Interagency Fire Enterprise Geospatial Portal (Fire EGP)



Owner/Lead Agency: National Interagency Fire Center (NIFC)

Description: The Fire EGP provides standardized geospatial information for the full range of wildfire activities ranging from response to planning, and leverages a central source of spatial data for mapping, decision support, business intelligence, and situational awareness.

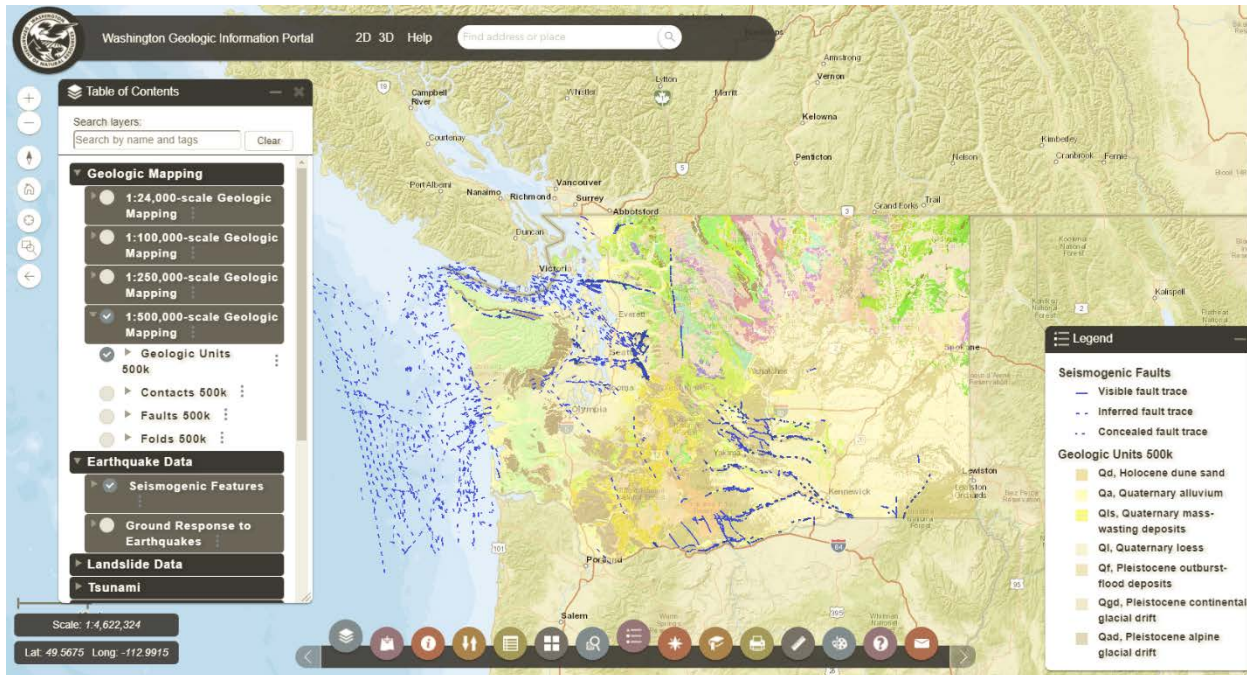
Portal Characteristics:

- Specific to wildfire
- Overlays nationwide wildfires & corresponding response efforts with data layers including population, weather, airspace, and other relevant data to wildfire response
- Requires account logins issued by the NIFC

Information Sensitivity: Publicly available, yet requires login

URL: <https://egp.nwcg.gov>

Washington Geologic Information Portal



Owner/Lead Agency: Washington State Department of Natural Resources (DNR)

Description: The WA Geologic Information Portal is a GIS portal that provides various layers of geologic hazard data (earthquake, volcanoes, tsunamis, geothermal, minerals, etc.) over a map of Washington state. This tool is great for seeing characteristics and locations of geologic hazards in our state. This tool is not used for incident response or visualizing dynamic (changing) information. It is a tool for assessing a given location's vulnerability to certain geologic hazards.

Portal Characteristics:

- Specific to geologic hazards
- Built on the ESRI ArcGIS platform
- Allows users to upload their own data to compare with available geologic hazard data
- Used for analysis of known geologic hazards, not for incident response mapping or coordination

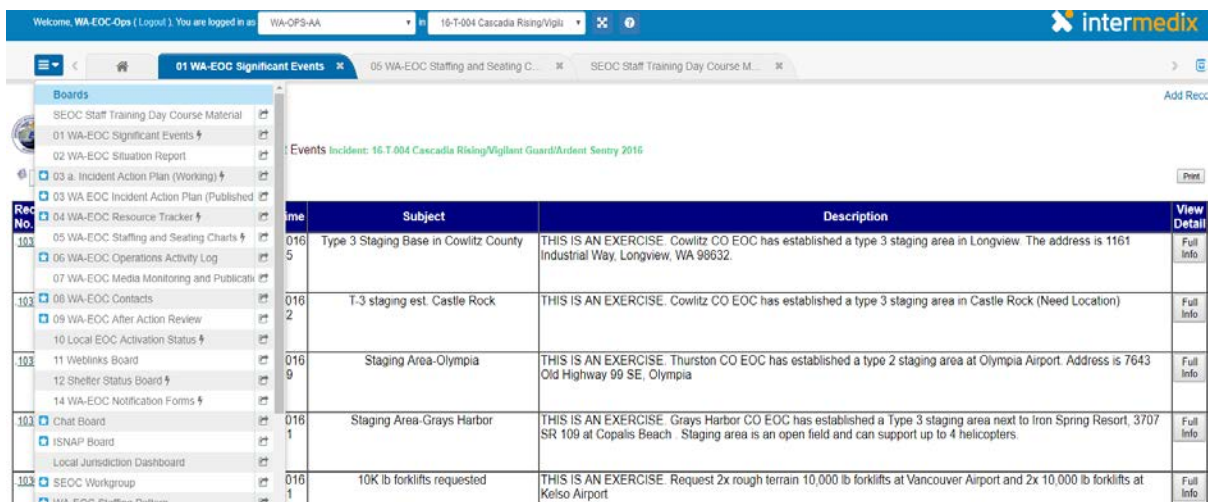
Information Sensitivity: Publicly available

URL: <https://geologyportal.dnr.wa.gov/>

Incident Management Platforms

Incident management platforms are designed to collect event-specific information and organize it into pre-determined categories or report formats to support response efforts. They may include a geospatial component, or may be used in conjunction with one. They have an inherent characteristic of information sharing but are not intended to be used outside of response operations to specific disasters or incidents.

WebEOC



The screenshot displays the WebEOC web application interface. At the top, there is a navigation bar with the Intermedix logo and user information. Below this, a sidebar on the left lists various 'Boards' and 'Events' for navigation. The main content area features a table with the following columns: 'Rec No.', 'Time', 'Subject', 'Description', and 'View Detail'. The table contains several rows of event data, including staging areas in Cowlitz County, Castle Rock, Olympia, and Grays Harbor, as well as a request for 10K lb forklifts.

Rec No.	Time	Subject	Description	View Detail
103	016 5	Type 3 Staging Base in Cowlitz County	THIS IS AN EXERCISE. Cowlitz CO EOC has established a type 3 staging area in Longview. The address is 1161 Industrial Way, Longview, WA 98632.	Full Info
103	016 2	T-3 staging est. Castle Rock	THIS IS AN EXERCISE. Cowlitz CO EOC has established a type 3 staging area in Castle Rock (Need Location)	Full Info
103	016 9	Staging Area-Olympia	THIS IS AN EXERCISE. Thurston CO EOC has established a type 2 staging area at Olympia Airport. Address is 7643 Old Highway 99 SE, Olympia	Full Info
103	016 1	Staging Area-Grays Harbor	THIS IS AN EXERCISE. Grays Harbor CO EOC has established a Type 3 staging area next to Iron Spring Resort, 3707 SR 109 at Copalis Beach. Staging area is an open field and can support up to 4 helicopters.	Full Info
103	016 1	10K lb forklifts requested	THIS IS AN EXERCISE. Request 2x rough terrain 10,000 lb forklifts at Vancouver Airport and 2x 10,000 lb forklifts at Kelso Airport	Full Info

Owner/Lead Agency: Intermedix / Multiple public-sector emergency management organizations utilize this system, including:

- FEMA Region 10
- Washington Military Department, Emergency Management Division
- 36 Washington Counties

Description: WebEOC is a standard tool used by many emergency management organizations across the country. It is the overarching incident management software for State Emergency Operations Center (SEOC) activations. Private sector account credentials and data layers can facilitate public-private information sharing.

Portal Characteristics:

- Software incident management system
- Includes event reporting, resource tracking, contact lists, report generation and information management
- Accessible to federal, state and local levels of government
- Most common standard used for incident management in the state and region
- Linked to Washington Information Sharing Environment (WISE) geospatial portal

Information Sensitivity: Publicly available

URLs: <http://preparedness.intermedix.com/solutions/webeoc> | <https://mil.wa.gov/other-links/web-eoc>

Northwest Interagency Coordination Center (NWCC):

Incident Information
Large Fire Information Summary
Large Fire Map
All-Risk Incidents

Predictive Services
Emissions
Weather
Public Fire Danger
Outlooks
Map/Geography/Geospatial
Fire Analysis

Logistics/Dispatch
Dispatch
Aviation
Onsite
Equipment/Supplies
Overhead
All-Risk Support

Administration
Emergency Incident Investigation
Pacific Northwest Wildfire Coordinating Group
NW MAC
Northwest Gear Board
Policy and Reports
Incident Business Management
Safety Management
Y/N/A
Software Applications
Training
NWCC Publications
NW Dispatch Coordination

Related Links
Area Links
National Links

Welcome to the Northwest Coordination Center

The Northwest Interagency Coordination Center (NWCC) is the Geographic Area Coordination Center for the Northwest Region which includes the States of Oregon and Washington. Located in Portland, OR, the NWCC serves as the focal point for interagency resource coordination, logistics support, aviation support and predictive services for all state and federal agencies involved in wildland fire management and suppression in the region. Cooperating agencies include the: Bureau of Land Management, US Forest Service, Oregon Dept. of Forestry, US Fish and Wildlife Service, Bureau of Indian Affairs, Washington Dept. of Natural Resources and the National Park Service.

[Click Here for information on Emergency Medical Evacuation.](#)
[Safety Alert - Heat Related Illness - Click Here for Information.](#)
[DRTI - Heat Detection Flight Ordering - Click Here for Information](#)

Northwest Fuels and Fire Behavior Advisories

- No Current Fuels and Fire Behavior Advisories for the Northwest

Current Northwest Fire Situation - Daily Updates

- [Large Fire Information Summary](#) - Detailed description including resources assigned, current conditions, etc.
- [Large Fire Map](#) - Displays active large fire incidents within Oregon and Washington.
- [Morning Briefing](#) - Updated each morning with latest fire activity and fire weather alerts.
- [Daily Situation Report](#) - Daily statistics of fire activity reported by agency and local dispatch offices in the region.
- [7-Day Significant Fire Potential](#) - Large fire potential and weather synopsis for the next seven days within the Northwest.
- [National 7-Day Significant Fire Potential](#) - National large fire potential in interactive map format.

Large Fire Map

The Northwest Large Fire map depicts large fires in Oregon and Washington reported to the NWCC and is updated daily throughout the fire season.

Preparedness Levels
Northwest PL:2
National PL:2

NWCC Public Information Blog
www.nwccinfo.blogspot.com

Owner/Lead Agency: Federal Bureau of Land Management (BLM) / Northwest Interagency Coordination Center (NWCC)

Description: The Northwest Interagency Coordination Center (NWCC) is the Geographic Area Coordination Center for the Northwest Region which includes the States of Oregon and Washington. The NWCC serves as the focal point for interagency resource coordination, logistics support, aviation support and predictive services for all state and federal agencies involved in wildland fire management and suppression in the region. Cooperating agencies include the: Bureau of Land Management, US Forest Service, Oregon Dept of Forestry, US Fish and Wildlife Service, Bureau of Indian Affairs, Washington Dept. of Natural Resources and the National Park Service.

Portal Characteristics:

- Specific to wildfire
- Includes informational products such as fire maps, large fire summaries, predictive services, links to partners
- Links to wildfire coordination portals including Resource Ordering and Status System (ROSS), dispatch tools, and contracting information
- Provides data to [InciWeb](https://inciweb.nifc.gov/), a national incident information system that delivers fire news from specific incidents throughout the entire country

Information Sensitivity: Publicly available, wildfire coordination portals require login

URL: <https://gacc.nifc.gov/nwcc/>

Information Sharing Networks

Information sharing networks enable the exchange of information between all levels of government and the private sector. In some cases, these networks accommodate Sensitive but Unclassified (SBU) information and require some degree of vetting and account credentialing. While these networks may be utilized during response operations, their functionality extends outside of response operations (i.e. they are used during “normal”, “day-to-day” operations or “steady state” operations). Homeland security, public safety and infrastructure communities use these networks to share information about threats & risk, and coordinate planning and mitigation activities.

Homeland Security Information Network (HSIN)

HSIN | Homeland Security Information Network

About Governance Training Partners HUWG Best Practices FAQs Contact Search this site...

SHARE YOUR THOUGHTS

Have you discovered a new way to use HSIN? Do you have an idea about how to improve network features? We want to hear about it! Let us know by sending an email to HSIN.Outreach@hq.dhs.gov.

Share Your Thoughts

- RISSNET™ About ACCESS ▶
- COP Mobile About ACCESS ▶
- Take a HSIN Class ▶
- Find Geospatial Resources ▶
- View HSIN Communities ▶
- Access HSIN Publications ▶
- Tell Us How You Use HSIN ▶
- Watch HSIN Videos ▶
- Read Success Stories ▶

Owner/Lead Agency: Federal Department of Homeland Security

Description: HSIN is a network for homeland security mission operations to share Sensitive but Unclassified (SBU) information. Federal, State, Local, Territorial, Tribal, International and Private Sector homeland security partners may use HSIN to manage operations, analyze data, send alerts and notices, and in general, share information.

Portal Characteristics:

- Alerts and Notifications
- Basic Learning Management System (LMS)
- Comprehensive HSIN Training
- Document Repository
- GIS Mapping
- Instant Messaging (HSIN Chat)
- Managed Workflow Capabilities
- Secure Messaging (HSINBox)
- Web Conferencing (HSIN Connect)

Information Sensitivity: Sensitive but Unclassified / For Official Use Only (FOUO)

URL: <https://www.dhs.gov/homeland-security-information-network-hsin>

InfraGard



Owner/Lead Agency: InfraGard / Federal Bureau of Investigation (FBI)

Description: InfraGard is a partnership between the FBI and members of the private sector. The InfraGard program provides a vehicle for public-private collaboration to expedite the exchange of information and promotes mutual learning opportunities relevant to the protection of Critical Infrastructure. InfraGard's membership includes business executives, entrepreneurs, military and government officials, computer professionals, academia and state and local law enforcement.

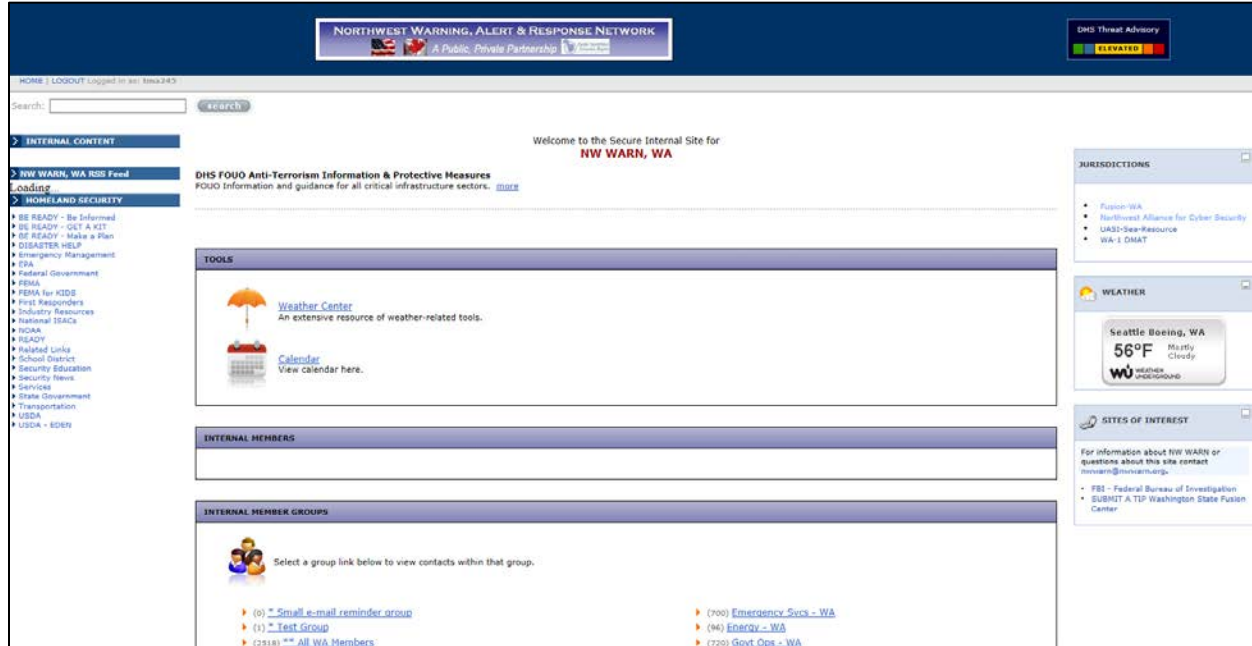
Portal Characteristics:

- Closed network with account credentialing
- Based on regional “chapters”, but with access to broader, nation-wide information
- Focus on critical infrastructure with strong emphasis on cyber crime
- FBI news feed

Information Sensitivity: Sensitive but Unclassified / For Official Use Only (FOUO)

URL: <https://www.infragard.org>

Northwest Warning, Alert & Response Network (NW WARN)



Owner/Lead Agency: Pacific Northwest Economic Region (PNWER) / Washington State Fusion Center (WSFC)

Description: NW WARN is essentially a large contact list that is organized in smaller lists determined by critical infrastructure sectors, political jurisdictions, and/or other relevant categorization. Members are provided membership to the relevant sub-categories based on their individual subject matter interests. The Washington State Fusion Center utilizes the list to distribute emails relevant to the homeland security, public safety, and critical infrastructure communities.

Portal Characteristics:

- Closed network with account credentialing
- Membership provides access to contact lists
- Members are given access to sub-categories based on their interest

Information Sensitivity: Access to NW WARN is not sensitive, however products distributed to NW WARN distribution lists may be For Official Use Only (FOUO)

URL: <http://nwwarn.org>

FEMA National Business Emergency Operations Center (NBEOC)

Owner/Lead Agency: FEMA (Office of External Affairs, Private Sector Division)

Description: The National Business Emergency Operations Center (NBEOC) is FEMA's virtual clearing house for two-way information sharing between public and private sector stakeholders in preparing for, responding to, or recovering from disasters. Participation in the NBEOC is completely voluntary and open to all members of the private sector, including large and small businesses, chambers of commerce, trade associations, universities, think-tanks, and non-profits. During response activities, NBEOC members are linked into FEMA's National Response Coordination Center (NRCC), activated Regional Response Coordination Centers (RRCCs), and the broader network of emergency management operations to include our state and federal partners.

Portal Characteristics:

- Joining the NBEOC puts you on a contact list for notifications of NBEOC activity
- During response activities, NBEOC sessions are held in a webinar format where briefs are provided and open discussion occurs
- NBEOC generally only activity occurs where there is a federally declared disaster. State and local emergency managers generally participate in NBEOC webinars when their jurisdictions are within the declared disaster area

Information Sensitivity: Publicly available

URL: <https://www.fema.gov/nbeoc>

Seattle / King County Business Emergency Operations Center (BEOC)

The screenshot displays the Yammer interface for the Seattle King County Business Emergency Operations Center. At the top, the header reads "SEATTLE KING COUNTY BUSINESS EMERGENCY OPERATIONS CENTER". A notification box states, "The Seattle King County BEOC is not activated." Below this, there are tabs for "DISCOVERY", "ALL", and "FOLLOWING". A post by Debbie Goetz is shown, dated September 28 at 10:13am, with the subject "RE: News Release Cindi Barker award". The post includes links to two tweets from FEMA and a placeholder for an image. On the right side, there is a "GETTING STARTED" section with a progress bar at 80% and a prompt to "Write your first post". Below that is a "RECENT ACTIVITY" section showing user actions like "Janice Rahman changed their Location to ECC-ES-0100." and "Chris Hartinger viewed an image.". At the bottom right, a "SUGGESTED PEOPLE" section lists "Evan Clifforne" from Project Belltown.

Owner/Lead Agency: Microsoft Yammer / Seattle & King County Offices of Emergency Management

Description: The Seattle King County Business Emergency Operations Center (NBEOC) is built in the Microsoft Yammer social media platform. The BEOC offers two-way communication between Seattle and King County Office of Emergency management in a social media format with groups organized around infrastructure sectors and message boards the share information.

Portal Characteristics:

- Need a Yammer account to participate
- Access to group and sub-groups granted by administrator
- Accessible during activations of the Seattle Emergency Operations Center and/or the King County Regional Emergency Communication Coordination Center
- Relevant to areas under the City of Seattle or King County jurisdiction

Information Sensitivity: Publicly available, requires a Yammer account and permission to join the group from an administrator

URL: <https://www.yammer.com/kingcountybusinessemergencyoperationscenter>