

# 4TH QUARTER MEETING NOTES

Infrastructure Resilience Sub-Committee (IRSC)

A sub-committee of the Washington State Emergency  
Management Council

Meeting notes and supporting documentation from the 4th Quarter 2017 IRSC  
meeting held on October 18th in Olympia, WA

## Contents

Meeting Notes .....	2
Attendance & Background .....	2
Resilient WA Subcabinet Update .....	2
Updates on other Infrastructure Related Initiatives .....	3
Regional Resilience Assessment Program (RRAP). ....	3
Puget Sound Regional Supply Chain Resilience Study.....	3
Department of Health’s (DOH) Office of Drinking Water (ODW) .....	3
Public-Private Information Sharing Framework.....	3
Post-disaster Re-Entry .....	4
Way Forward: IRSC Meeting Focus for 2018.....	4
Attachments.....	5
1. Emergency Management Information Portals .....	5
2. Integration Framework: Private Sector – State Emergency Operations Center .....	5
3. WebEOC Private Sector User Agreement .....	5

## Meeting Notes

### Attendance & Background

Attendance included 33 individuals from both the public and private sector (21 public, 12 private). See the [IRSC Website](#) for previous meeting notes, background and the IRSC Charter.

### Resilient WA Subcabinet Update

[On September 27<sup>th</sup> the Resilient WA Subcabinet meet](#) at the Washington State Capitol to brief Governor Inslee on the findings from the 7 workgroups created in response to [Directive 16-19](#), as well as the additional 4 workgroups the Governor requested during the [May 3 Resilient WA Subcabinet meeting](#). These workgroups are:

#### 2012 Resilient WA Report:

- Make schools resilient: structurally, socially, and educationally
- Encourage utility providers (domestic water supply, wastewater, electricity, natural gas, petroleum, and information and communication technology) identify the vulnerabilities in their system and mitigate the deficiencies
- Improve the resilience of buildings in areas of high seismic hazard to improve life safety and increase the number of people who will be able to shelter in place
- Strengthen business continuity planning efforts
- Strengthen regional transportation networks
- Make Hospitals resilient – structurally and functionally
- Identify and map in greater detail sources of seismicity and geologically hazardous areas and develop plans for mitigation of identified hazards
- Improve life safety in coastal communities at risk of local tsunamis

#### Cascadia Rising After Action Report:

- Develop a Mass Care Operational Coordination Plan Annex
- Plan for the distribution of bulk fuel through the use of master contracts in order to support relief efforts, restore essential services, and re-establish commerce

#### Emergency Communications:

- Provide an update on the status of the state's emergency communication system, identify deficiencies, and provide recommendations to remedy these deficiencies

Per the Governor's directive, the Sub-Cabinet provided the governor with a detailed draft report that catalogues recommendations pertaining to each of the 11 workgroups, as well as highlights overarching policy recommendations. This report may be viewed on the [Resilient WA Subcabinet Website](#).

## Updates on other Infrastructure Related Initiatives

Regional Resilience Assessment Program (RRAP). The Department of Homeland Security's Office of Infrastructure Protection has been continuing its assessment of the regional transportation networks in Western Washington following a catastrophic earthquake. The assessment is focused on two objectives:

1. Analyze and identify priority multi-modal transport routes and facilities that would likely be utilized in the CSZ response phase and determine capacity of existing, most-viable routes
2. Identify and prioritize transportation routes and facilities for potential investments of hardening, retrofitting, and mitigation measures

The assessment will generate a report in mid-2018, followed by an 18-month implementation phase.

Puget Sound Regional Supply Chain Resilience Study. Under the auspices of the [FEMA Technical Assistance Program](#), 5 Puget Sound jurisdictions (Snohomish County, King County, City of Seattle, Pierce County, Thurston County) have embarked on a study of the regions supply chains relating to grocery stores, pharmaceuticals, and fuel. The WA State Emergency Management Division is supporting the effort to help maintain continuity with existing programs across the state. Since this effort has just begun, updates and findings will be made available at future IRSC meetings.

## Department of Health's (DOH) Office of Drinking Water (ODW)

Greg McKnight of the Office of Drinking Water gave a brief overview of what is being done at the state level to address the resilience of the Water/Wastewater sector here in Washington. He highlighted issues relating to jurisdictional responsibilities during disaster response operations, as well as vague legal mapping of who has regulatory authority over the myriad of different water districts present in the state. The Water Supply Forum was also highlighted as a powerful effort being spearheaded by the 4 largest water utilities in the greater Puget Sound region. Useful links:

[Washington Department of Health's Office of Drinking Water](#)

[Water Supply Forum's Resiliency Project](#)

## Public-Private Information Sharing Framework

Per the 3<sup>rd</sup> quarter IRSC meeting, WA Emergency Management provided the group with a document that provides a high-level overview of the different information portals used in emergency management across the state. This overview, titled *Emergency Management Information Portals*, is included in these notes as Attachment 1.

Based on the need for better public-private information sharing in emergency management, the Washington Military Department's Emergency Management Division drafted a framework

for providing private sector organizations direct access into the Washington State Emergency Operations Center (SEOC). This framework, titled *Integration Framework: Private Sector – State Emergency Operations Center*, is accompanied by a draft *WebEOC Private Sector User Agreement*. These documents are included in these notes as Attachment 2 & 3.

Feedback on both the framework and the user agreement is greatly appreciated. Please return any feedback to Tristan Allen ([tristan.allen@mil.wa.gov](mailto:tristan.allen@mil.wa.gov)) by December 1<sup>st</sup>.

### Post-disaster Re-Entry

The Washington State Emergency Management Division's Private Sector & Infrastructure Program [presented](#) on the two different state-level re-entry systems in Washington. The first system, which is operational under Washington State Department of Transportation (WSDOT), is for freight prioritization when a major highway route is closed and traffic is forced to use a designated detour route. More information on this program is on the [WSDOT Commercial Vehicle Detour Pass Website](#).

The second system, which is operated by the Washington Military Department's Emergency Management Division, is approved for operation and will be launched pending the development of a software platform to support it. This system is designed to facilitate private sector re-entry to access communities or facilities post-disaster. For more information on this program, please read the [Business Re-Entry \(BRE\) Registration Program Document](#).

### Way Forward: IRSC Meeting Focus for 2018

- Washington Military Department's Emergency Management Division will release the dates for 2018 by the end of November
- Potential focus areas include:
  - Catastrophic planning. Align IRSC meeting with state catastrophic planning efforts. Potential to hold sector specific planning meetings
  - Identification of infrastructure "essential elements of information (EEl)s" for information sharing
  - Mapping of infrastructure dependency and interdependencies
- If you are interested in hosting an IRSC meeting in 2018, please contact Tristan Allen ([tristan.allen@mil.wa.gov](mailto:tristan.allen@mil.wa.gov))

## Attachments

1. Emergency Management Information Portals
2. Integration Framework: Private Sector – State Emergency Operations Center
3. WebEOC Private Sector User Agreement



# EMERGENCY MANAGEMENT INFORMATION PORTALS

Washington Military Department  
Emergency Management Division  
Private Sector & Infrastructure Program

Brief overview of tools used to track information relating to critical infrastructure facilities. Various levels of government use these tools to plan for, respond to and recover from disasters.

## Contents

Geospatial Tools for Situational Awareness .....	2
Infrastructure Protection (IP) Gateway.....	3
Eagle-I .....	4
Washington State Energy Disruption Tracking (WSEDt) .....	5
Washington Information Sharing Environment (WISE) .....	6
National Interagency Fire Enterprise Geospatial Portal (Fire EGP) .....	7
Incident Management Software .....	8
WebEOC .....	9
Northwest Interagency Coordination Center (NWCC):.....	10
Information Sharing Networks .....	11
Homeland Security Information Network (HSIN) .....	12
InfraGard .....	13
Northwest Warning, Alert & Response Network (NW WARN).....	14
FEMA National Business Emergency Operations Center (NBEOC) .....	15
Seattle / King County Business Emergency Operations Center (BEOC).....	16

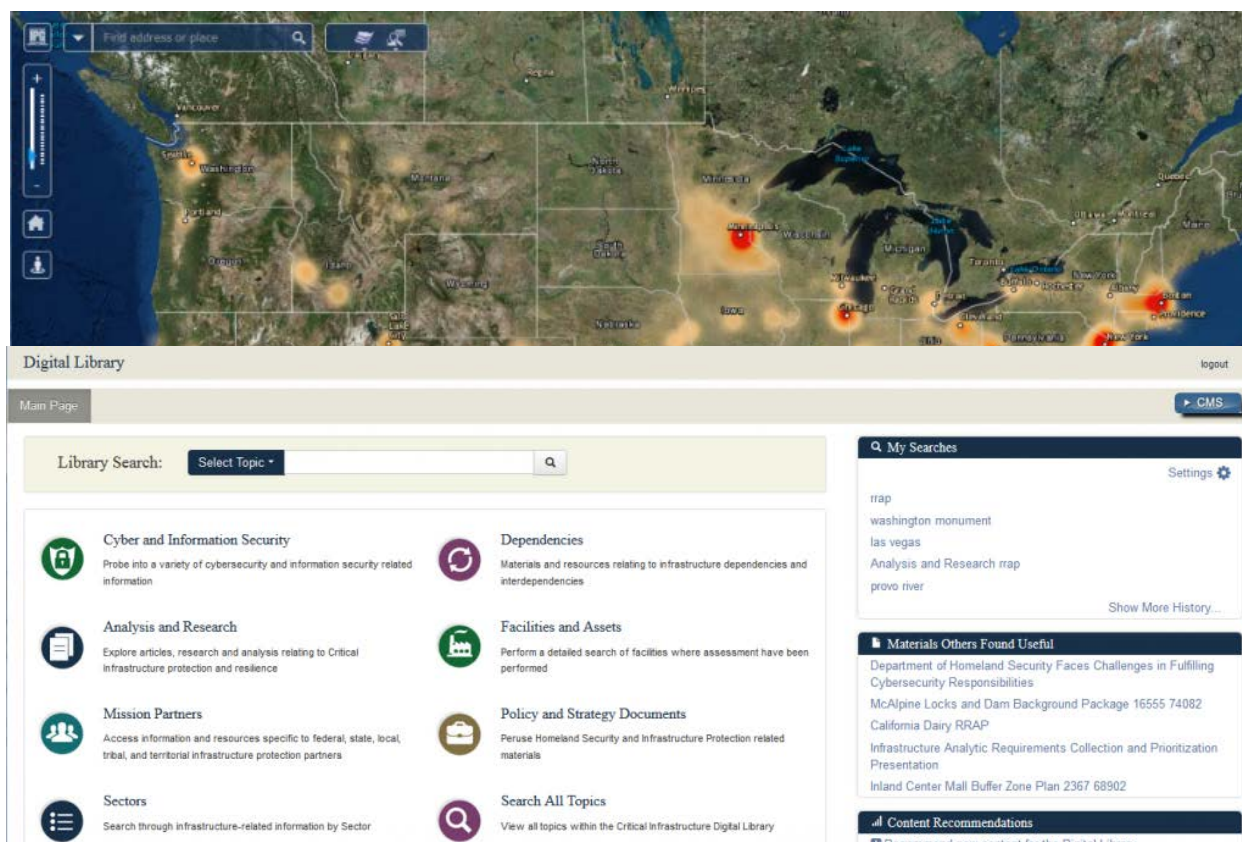
**Disclaimer:** The content of this document is the subjective analysis of current capabilities by the Washington Military Department, Emergency Management Division Private Sector & Infrastructure Program. It is not an official user guide for any system, nor is it a review of any software, website or organization. It is not an endorsement of any kind. The content of this document is subject to change based on updates to improve the accuracy of the information.

## Geospatial Tools for Situational Awareness

The following tools map data relating to infrastructure locations, emergency response operations, or both. These maps are interactive and generally include:

- Dynamic data feeds (i.e. information that changes based on input from a live source)
- Static data sets (i.e. information uploaded that generally will not change)
- User input data (i.e. information input through the systems user interface, like lines drawn around an active incident area, or an icon created to represent a given point of interest. Subject matter experts or incident management personnel generally input this information).

## Infrastructure Protection (IP) Gateway



**Owner/Lead Agency:** Federal Department of Homeland Security (Office of Infrastructure Protection)

**Description:** Federal repository for critical infrastructure information including individual facilities with corresponding assessments, analytical products and reports. Not a tool for public-private information sharing. Designed to receive information about public and private sector facilities to inform government decision makers and first responders.

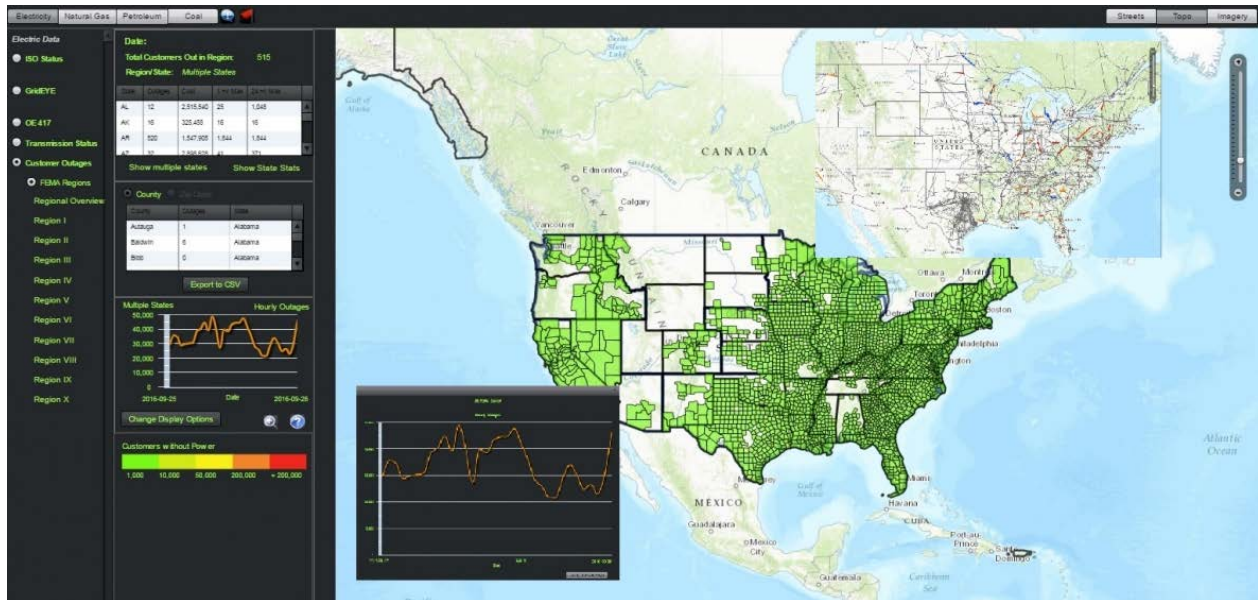
### Portal Characteristics:

- Database of critical infrastructure facilities across the nation
- Geospatial visualizations with multiple layers for sorting and viewing data
- Dependency mapper that shows infrastructure dependencies between facilities
- Events and Incident Tracker for managing pre-planned events or disasters
- Digital library with information on infrastructure sectors, policy & strategy documents, cyber information, among other topics.

**Information Sensativity:** Protected Critical Infrastructure Information (PCII). Government only access through the Department of Homeland Security.

**URL:** <https://www.dhs.gov/ipgateway>

## Eagle-I



**Owner/Lead Agency:** Federal Department of Energy (Oak Ridge National Laboratory)

**Description:** Federal power outage tracking system designed to provide a high-level overview of the status of the country's electric grid. Not a tool for public-private information sharing. Designed to receive information about public and private sector facilities to inform government decision makers and first responders.

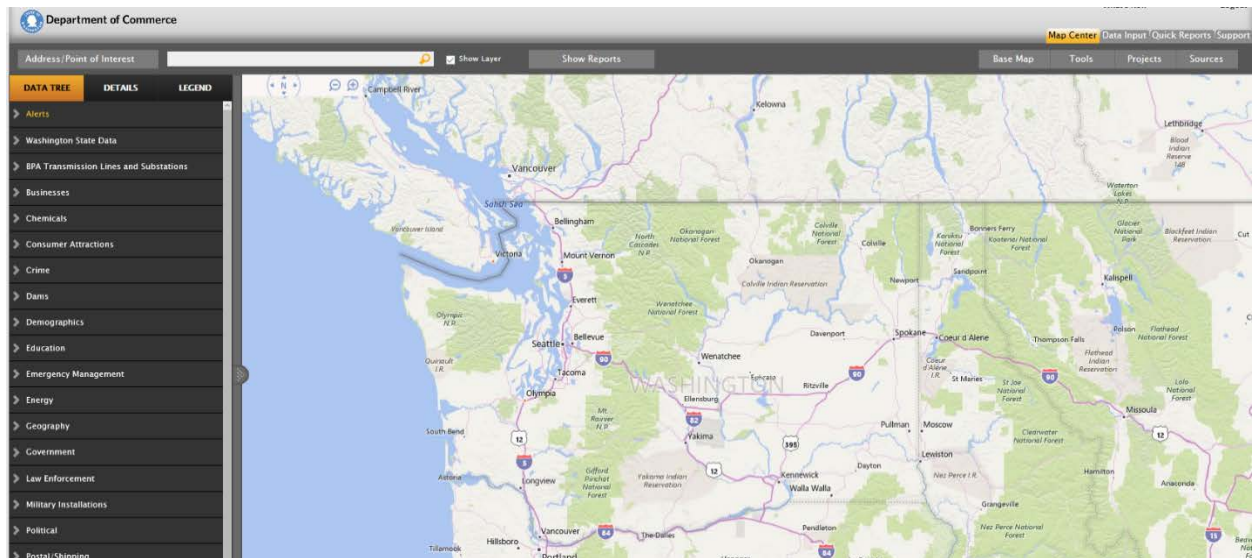
### Portal Characteristics:

- Geospatial portal tracking power grid status
- Tracks transmission line status and customer outage numbers by county, state, and FEMA region
- Expanding to include hazard overlays to identify risk to the electric grid, petroleum and natural gas infrastructure

**Information Sensativity:** For Official Use Only (FOUO). Government only access through the federal Department of Energy

**URL:** <https://eagle-i.doe.gov>

## Washington State Energy Disruption Tracking (WSEDt)



**Owner/Lead Agency:** Planet Risk, Inc. / Washington State Department of Commerce (State Energy Office)

**Description:** Geospatial portal, with corresponding analysis and reports, designed for tracking and managing the effects of disasters on energy infrastructure. Serves as the primary tool for the Emergency Support Function (ESF) 12 when the WA State Emergency Operations Center (SEOC) activates in response to a disaster. Not currently utilized as a tool for public-private information sharing. Designed to receive information about public and private sector facilities to inform government decision makers and first responders.

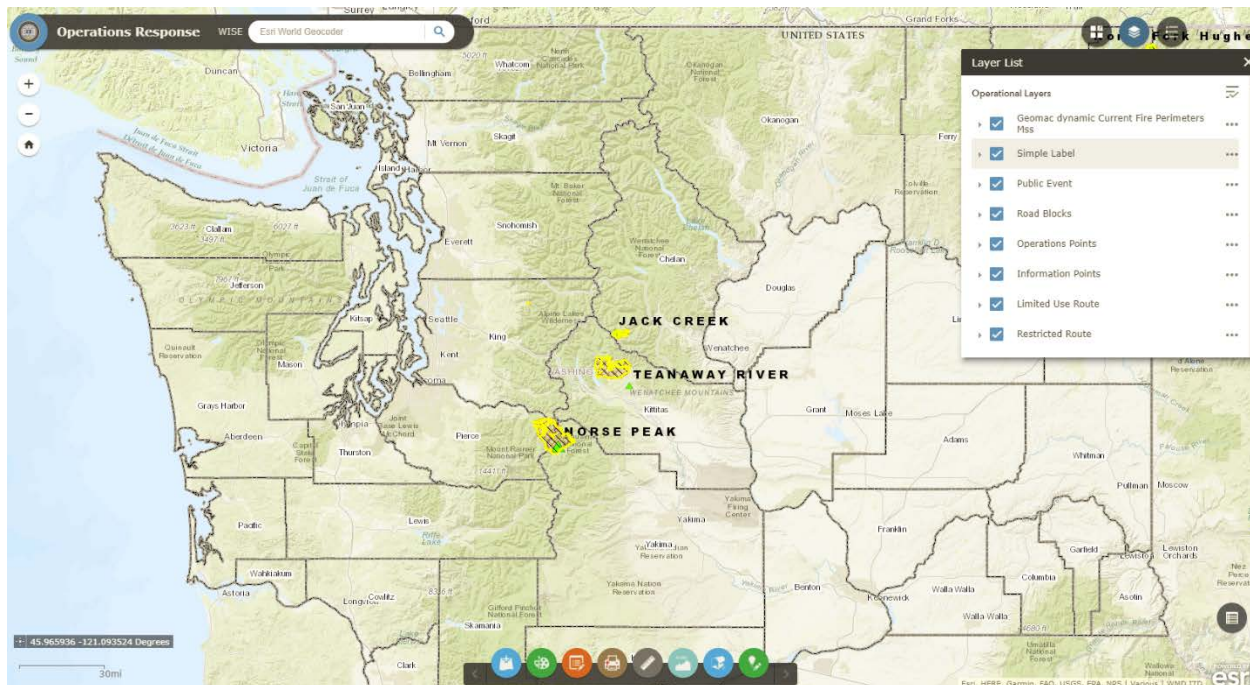
### Portal Characteristics:

- Geospatial portal tracking infrastructure facility locations
- Some data is a live feed from facility owner/operators, some data is a static upload
- Feature for managing a disaster and producing supporting documents
- Requires an end user to manually update data during a response

**Information Sensitivity:** For Official Use Only (FOUO). Government only access through the Washington State Department of Commerce.

**URL:** [www.planetrisk.com](http://www.planetrisk.com)

## Washington Information Sharing Environment (WISE)



**Owner/Lead Agency:** Washington Military Department, Emergency Management Division

**Description:** Geospatial portal that aggregates all relevant data layers for emergency management in the state of Washington. Administered by the Military Department, this tool is the primary visualization tool used in the WA State Emergency Operations Center (SEOC) to visualize all information relating to response operations. Private sector account credentials and data layers can facilitate public-private information sharing.

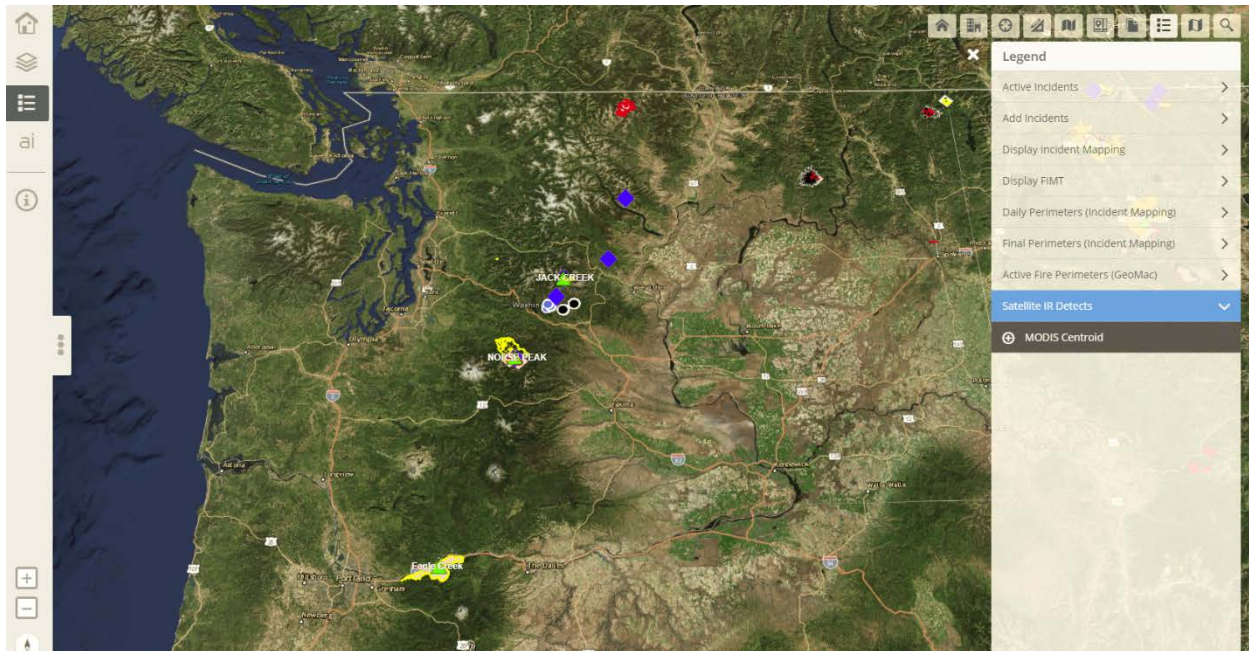
### Portal Characteristics:

- Built on ESRI ArcGIS software platform
- Geospatial portal with a wide range of layers that include geography, hazards, infrastructure, and population
- Tied into WebEOC mapping function

**Information Sensativity:** Publicly available. Some portions are For Official Use Only (FOUO)

**URL:** <https://wise.wamil.us/wmd/home/>

## National Interagency Fire Enterprise Geospatial Portal (Fire EGP)



**Owner/Lead Agency:** National Interagency Fire Center (NIFC)

**Description:** The Fire EGP provides standardized geospatial information for the full range of wildfire activities ranging from response to planning, and leverages a central source of spatial data for mapping, decision support, business intelligence, and situational awareness.

### **Portal Characteristics:**

- Specific to wildfire
- Overlays nationwide wildfires & corresponding response efforts with data layers including population, weather, airspace, and other relevant data to wildfire response
- Requires account logins issued by the NIFC

**Information Sensativity:** Publicly available, yet requires login

**URL:** <https://egp.nwcg.gov>

## Incident Management Software

Incident management software systems are designed to collect event-specific information and organize it into pre-determined categories or report formats to support response efforts. They may include a geospatial component, or may be used in conjunction with one. They have an inherent characteristic of information sharing but are not intended to be used outside of response operations to specific disasters or incidents.

## WebEOC

The screenshot shows the WebEOC web application. At the top, there's a navigation bar with the Intermedix logo and user information. Below it, a sidebar on the left lists various 'Boards' and 'Events'. The main content area displays a table of events. The table has columns for 'Rec No.', 'Time', 'Subject', 'Description', and 'View Detail'. The events listed are related to staging areas and exercises in various locations like Longview, Castle Rock, Olympia, and Grays Harbor.

Rec No.	Time	Subject	Description	View Detail
103	016 5	Type 3 Staging Base in Cowlitz County	THIS IS AN EXERCISE. Cowlitz CO EOC has established a type 3 staging area in Longview. The address is 1161 Industrial Way, Longview, WA 98632.	Full Info
103	016 2	T-3 staging est. Castle Rock	THIS IS AN EXERCISE. Cowlitz CO EOC has established a type 3 staging area in Castle Rock (Need Location)	Full Info
103	016 9	Staging Area-Olympia	THIS IS AN EXERCISE. Thurston CO EOC has established a type 2 staging area at Olympia Airport. Address is 7643 Old Highway 99 SE, Olympia	Full Info
103	016 1	Staging Area-Grays Harbor	THIS IS AN EXERCISE. Grays Harbor CO EOC has established a Type 3 staging area next to Iron Spring Resort, 3707 SR 109 at Copalis Beach. Staging area is an open field and can support up to 4 helicopters.	Full Info
103	016 1	10K lb forklifts requested	THIS IS AN EXERCISE. Request 2x rough terrain 10,000 lb forklifts at Vancouver Airport and 2x 10,000 lb forklifts at Kelso Airport	Full Info

**Owner/Lead Agency:** Intermedix / Multiple public-sector emergency management organizations utilize this system, including:

- FEMA Region 10
- Washington Military Department, Emergency Management Division
- 36 Washington Counties

**Description:** WebEOC is a standard tool used by many emergency management organizations across the country. It is the overarching incident management software for State Emergency Operations Center (SEOC) activations. Private sector account credentials and data layers can facilitate public-private information sharing.

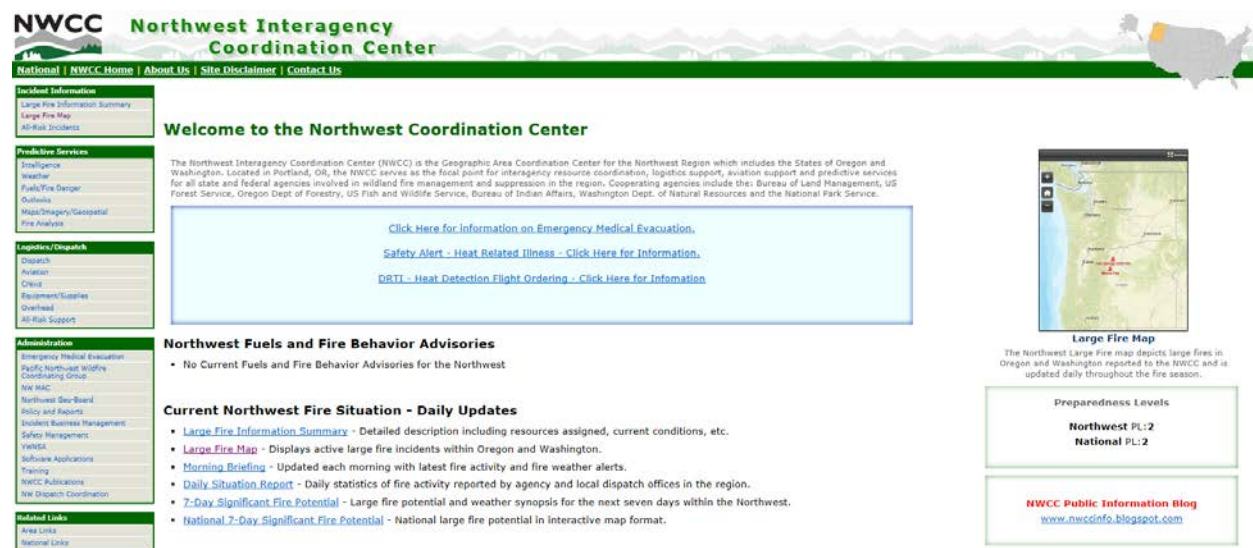
### Portal Characteristics:

- Software incident management system
- Includes event reporting, resource tracking, contact lists, report generation and information management
- Accessible to federal, state and local levels of government
- Most common standard used for incident management in the state and region
- Linked to Washington Information Sharing Environment (WISE) geospatial portal

**Information Sensativity:** Publicly available

**URLs:** <http://preparedness.intermedix.com/solutions/webeoc> | <https://mil.wa.gov/other-links/web-eoc>

## Northwest Interagency Coordination Center (NWCC):



**NWCC Northwest Interagency Coordination Center**

National | NWCC Home | About Us | Site Disclaimer | Contact Us

**Incident Information**

- Large Fire Information Summary
- Large Fire Map
- All-Risk Incidents

**Predictive Services**

- Threats
- Weather
- Public Fire Danger
- Outlook
- Map/Imagery/Geospatial
- Fire Analysis

**Logistics/Dispatch**

- Dispatch
- Aviation
- Onsite
- Equipment/Supplies
- Overhead
- All-Risk Support

**Administration**

- Emergency Medical Evacuation
- Pacific Northwest Wildfire Coordinating Group
- NW MAC
- Northwest Steering Board
- Policy and Reports
- Incident Business Management
- Safety Management
- YEMSA
- Software Applications
- Training
- NWCC Publications
- NW Dispatch Coordination

**Related Links**

- Area Links
- National Links

**Welcome to the Northwest Coordination Center**

The Northwest Interagency Coordination Center (NWCC) is the Geographic Area Coordination Center for the Northwest Region which includes the States of Oregon and Washington. Located in Portland, OR, the NWCC serves as the focal point for interagency resource coordination, logistics support, aviation support and predictive services for all state and federal agencies involved in wildland fire management and suppression in the region. Cooperating agencies include the: Bureau of Land Management, US Forest Service, Oregon Dept. of Forestry, US Fish and Wildlife Service, Bureau of Indian Affairs, Washington Dept. of Natural Resources and the National Park Service.

[Click Here for Information on Emergency Medical Evacuation.](#)

[Safety Alert - Heat Related Illness - Click Here for Information.](#)

[DRTI - Heat Detection Flight Ordering - Click Here for Information](#)

**Large Fire Map**

The Northwest Large Fire map depicts large fires in Oregon and Washington reported to the NWCC and is updated daily throughout the fire season.

**Preparedness Levels**

Northwest PL:2  
National PL:2

**NWCC Public Information Blog**  
[www.nwccinfo.blogspot.com](http://www.nwccinfo.blogspot.com)

**Owner/Lead Agency:** Federal Bureau of Land Management (BLM) / Northwest Interagency Coordination Center (NWCC)

**Description:** The Northwest Interagency Coordination Center (NWCC) is the Geographic Area Coordination Center for the Northwest Region which includes the States of Oregon and Washington. The NWCC serves as the focal point for interagency resource coordination, logistics support, aviation support and predictive services for all state and federal agencies involved in wildland fire management and suppression in the region. Cooperating agencies include the: Bureau of Land Management, US Forest Service, Oregon Dept of Forestry, US Fish and Wildlife Service, Bureau of Indian Affairs, Washington Dept. of Natural Resources and the National Park Service.

### Portal Characteristics:

- Specific to wildfire
- Includes informational products such as fire maps, large fire summaries, predictive services, links to partners
- Links to wildfire coordination portals including Resource Ordering and Status System (ROSS), dispatch tools, and contracting information

**Information Sensativity:** Publicly available, wildfire coordination portals require login

**URL:** <https://gacc.nifc.gov/nwcc/>

## Information Sharing Networks

Information sharing networks enable the exchange of information between all levels of government and the private sector. In some cases, these networks accommodate Sensitive but Unclassified (SBU) information and require some degree of vetting and account credentialing. While these networks may be utilized during response operations, their functionality extends outside of response operations (i.e. they are used during “normal”, “day-to-day” operations or “steady state” operations). Homeland security, public safety and infrastructure communities use these networks to share information about threats & risk, and coordinate planning and mitigation activities.

## Homeland Security Information Network (HSIN)



**Owner/Lead Agency:** Federal Department of Homeland Security

**Description:** HSIN is a network for homeland security mission operations to share Sensitive but Unclassified (SBU) information. Federal, State, Local, Territorial, Tribal, International and Private Sector homeland security partners may use HSIN to manage operations, analyze data, send alerts and notices, and in general, share information.

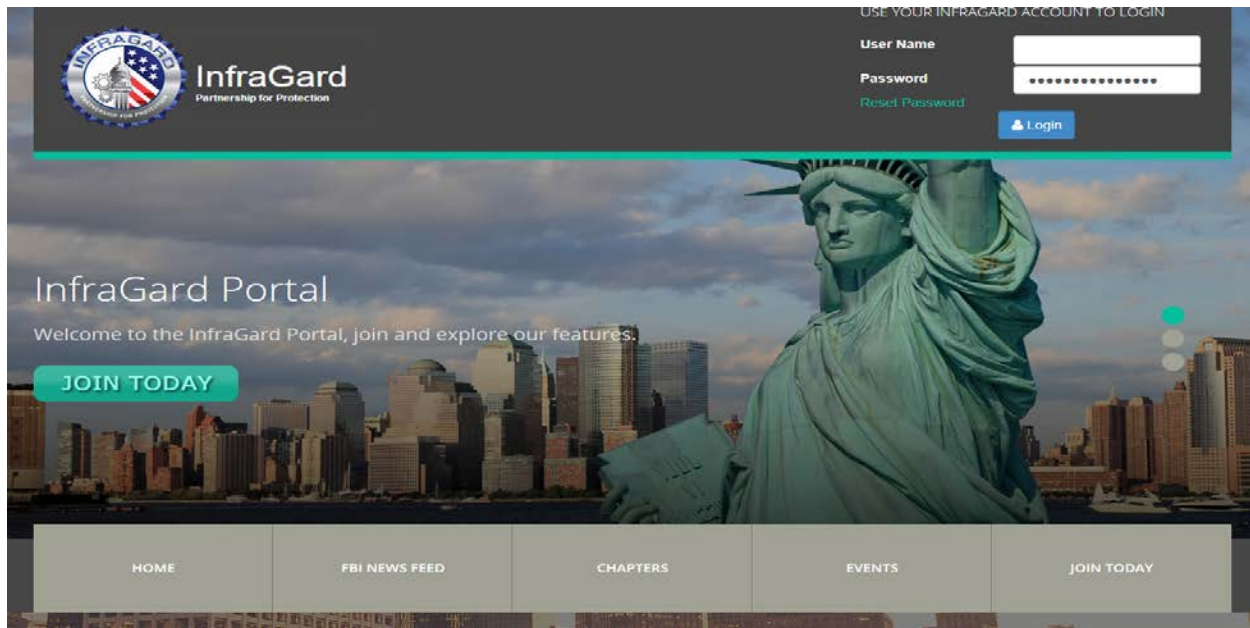
### **Portal Characteristics:**

- Alerts and Notifications
- Basic Learning Management System (LMS)
- Comprehensive HSIN Training
- Document Repository
- GIS Mapping
- Instant Messaging (HSIN Chat)
- Managed Workflow Capabilities
- Secure Messaging (HSINBox)
- Web Conferencing (HSIN Connect)

**Information Sensativity:** Sensitive but Unclassified / For Official Use Only (FOUO)

**URL:** <https://www.dhs.gov/homeland-security-information-network-hsin>

## InfraGard



**Owner/Lead Agency:** InfraGard / Federal Bureau of Investigation (FBI)

**Description:** InfraGard is a partnership between the FBI and members of the private sector. The InfraGard program provides a vehicle for public-private collaboration to expedite the exchange of information and promotes mutual learning opportunities relevant to the protection of Critical Infrastructure. InfraGard's membership includes business executives, entrepreneurs, military and government officials, computer professionals, academia and state and local law enforcement.

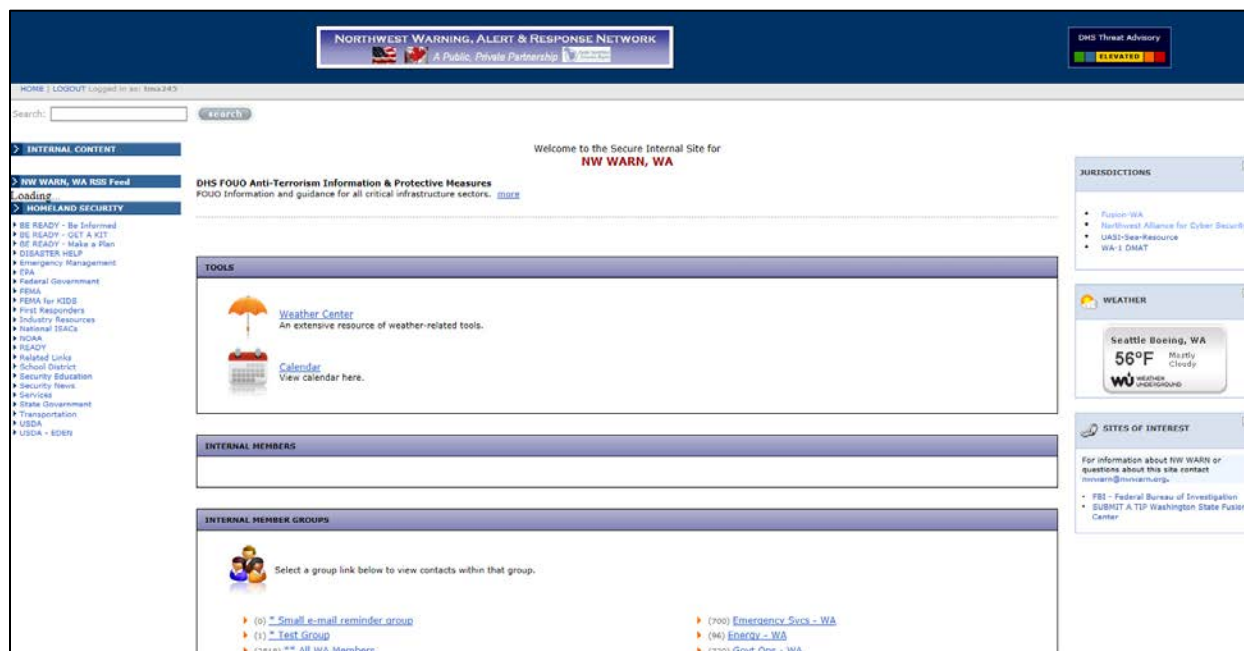
**Portal Characteristics:**

- Closed network with account credentialing
- Based on regional “chapters”, but with access to broader, nation-wide information
- Focus on critical infrastructure with strong emphasis on cyber crime
- FBI news feed

**Information Sensativity:** Sensitive but Unclassified / For Official Use Only (FOUO)

**URL:** <https://www.infragard.org>

## Northwest Warning, Alert & Response Network (NW WARN)



**Owner/Lead Agency:** Pacific Northwest Economic Region (PNWER) / Washington State Fusion Center (WSFC)

**Description:** NW WARN is essentially a large contact list that is organized in smaller lists determined by critical infrastructure sectors, political jurisdictions, and/or other relevant categorization. Members are provided membership to the relevant sub-categories based on their individual subject matter interests. The Washington State Fusion Center utilizes the list to distribute emails relevant to the homeland security, public safety, and critical infrastructure communities.

### Portal Characteristics:

- Closed network with account credentialing
- Membership provides access to contact lists
- Members are given access to sub-categories based on their interest

**Information Sensativity:** Access to NW WARN is not sensitive, however products distributed to NW WARN distribution lists may be For Official Use Only (FOUO)

**URL:** <http://nwwarn.org>

## FEMA National Business Emergency Operations Center (NBEOC)

FEMA Region 6 Contact Information	Chat (Everyone)	Headlines 8.31.17	Web Links
<p>R6 Private Sector Liaison - Eraina Perin eraina.perin@fema.dhs.gov 940-383-7293</p> <p>Attendee List (183)</p> <p>Active Speakers</p> <p>Hosts (2)</p> <p>Presntors (0)</p> <p>Participants (183)</p> <p>A Raffaelli</p> <p>Aimee Wilson</p> <p>Alyssa Young</p> <p>Amazon</p> <p>Amber Ellis (Uber)</p> <p>An</p> <p>Andrea Flournoy</p> <p>andy / RE-ISAC</p> <p>Angela Zavalney Atlas Oil CO.</p> <p>Barbie Meier</p> <p>Bill Wunemaker (ATA)</p> <p>Billy Brooks</p> <p>Bob Stefania</p> <p>Brandon Edwards</p> <p>Brian Barrier</p> <p>Brooks Nelson, U.S. Chamber Foundation</p> <p>Bruce Matthews</p> <p>c 2</p> <p>Casey Long</p> <p>Chad Gatlin</p> <p>Charles McCobb</p> <p>Chris McMahon</p> <p>Christine Palincsar</p> <p>Clint Franzen (OCC)</p> <p>Colin Franzen - 488</p>	<p>requests.</p> <p>David Tuscano: Will do, Thank You.</p> <p>Humanity Road Chris Thompson: tracker gas buddy.com indicates that of 25 gas stations in Dallas - 10 have no gas.</p> <p>Humanity Road Chris Thompson: We are also seeing this emerge in Social Media</p> <p>Gabriel Marcus-Cotto: Yes</p> <p>James Utley 2: Can't deliver supplies w/out fuel</p> <p>James Utley 2: We're telling our guys to fill-up before entering</p> <p>Dawn Yardeni: I will soon have an IRS/Harvey link to share. What's that process?</p> <p>Kathy Fulton - ALAN 2: Does the regional emergency declaration cover this?</p> <p>Kathy Fulton - ALAN 2: FMCSA Regional Emergency Declaration?</p> <p>Humanity Road Chris Thompson: yes</p> <p>Humanity Road Chris Thompson: I was in queue</p> <p>David Tuscano: How does a person ask a question on the phone to get in the que?</p> <p>Humanity Road Chris Thompson: I have question for fuel discussion - and could not get into queue</p> <p>Ronald Robbins: @Dawn. I have to check on where that information is shared.</p> <p>Gabriel Marcus-Cotto: Chris, did you "O"?</p> <p>Ronald Robbins: @David, press "O"</p> <p>Humanity Road Chris Thompson: ah - sorry was using #1</p> <p>Brandon Edwards: Does anyone know how USPS and FedEx deliveries are being handled at this time?</p> <p>Gabriel Marcus-Cotto: Shelters and hospitals are only part of the picture.</p> <p>Humanity Road Chris Thompson: am in queue now (star zero)</p> <p>Michael Dailley, R6 RSOC: Reminder - To report cyber infrastructure incidents or to request information, please contact US-CERT at <a href="mailto:us-cert@fbi.gov">us-cert@fbi.gov</a> or visit their Web page at <a href="http://www.us-cert.gov">www.us-cert.gov</a></p> <p>Ronald Robbins: @Brandon - I will check.</p> <p>Dave Lusk FedEx: <a href="http://www.fedex.com/us/services/alerts/">http://www.fedex.com/us/services/alerts/</a></p> <p>Ronald Robbins: @Dave - Thank you. I'll post this in the Headlines Pod as well.</p>	<p><b>SHELTERS:</b> Download the FEMA mobile app for shelter information, disaster resources, weather alerts, and safety tips, in English and in Spanish.</p> <p><b>Daily NBEOC call:</b> Dial in 5-10 minutes prior to start time using the Participant Phone Number and Participant Passcode. Time: 2 p.m. central/ 3 p.m. eastern <b>daily until further notice</b> Toll free: 855-363-0073 Participant Passcode: 127531</p> <p><b>MOTOR VEHICLE WAIVERS:</b> Federal Motor Carrier Regional Emergency Declaration posted to "File Share"</p> <p><b>Hurricane Harvey Leadership Map Book:</b> posted in "File Share" section on the right. The maps contain mandatory and voluntary evacuations, mode surge, traffic, road closures, airport closures and other items.</p> <p><b>HURRICANE HARVEY ECONOMIC IMPACT ANALYSIS</b> posted in "File Share"</p> <p>The Federal Aviation Administration (FAA) asking <b>drone operators</b> -- both hobbyists and commercial operators -- remain clear of search and rescue efforts.</p> <p>Mass Care is flooded with voluntary offers via phone call and - <b>PLEASE ROUTE ALL DONATIONS TO TEXAS VROAD AND NATIONAL VROAD</b> Links are posted on the "web links" section to the right. There will be a TXVROAD Coordination Call on Thursday, 08/31/2017 from 6-7 p.m. CT. The call in number is 888-585-9008/Code 952399179.</p> <p><b>ACCESS INFORMATION REQUESTS:</b></p> <p>At this time, for those organizations needing assistance in facilitating access into impacted Texas counties to provide <b>life sustaining commodities to shelter/ hospital/critical locations</b>, please send the following information to <a href="mailto:R6-privatesector@fema.dhs.gov">R6-privatesector@fema.dhs.gov</a> or submit via the <b>NEMA/IAEM Access portal</b> <a href="http://ppp.trustedops.com/">http://ppp.trustedops.com/</a>:</p> <ol style="list-style-type: none"> <li>1. What life-safety commodities are you transporting? (Please be advised that only life-saving/life-sustaining commodities are currently being allowed in to restricted areas)</li> <li>2. How many trucks are being sent/require access, and how are trucks marked?</li> <li>3. What is end destination and known route?</li> <li>4. What IDs do drivers have?</li> <li>5. What is the ETA for destination?</li> </ol> <p>Law enforcement must have all information being requested in order to work your access. Please note that this is a temporary solution to facilitate access for life saving and life sustaining transports</p> <p>For the latest information on Texas road closures/status, please visit the Texas DOT link in the Web Links section. As additional information comes available related to access and reentry procedures, we will share it via the NBEOC portal. Thank you.</p> <p><b>Houston Airports begin limited domestic service , with plans for full service by this weekend.</b></p> <p><b>Transportation Routing Hotline - 833-TXSTORM - For Federal and State Responders ONLY</b></p> <p><b>Texas Attorney General releases Price Gouging Information:</b> Attorney General's Consumer Protection Toll-Free Hotline Call: 1-800-621-0508 Email: <a href="mailto:consumeremergency@oag.texas.gov">consumeremergency@oag.texas.gov</a></p> <p><b>D &amp; B Economic Business Risk Profile:</b> <a href="https://public.tableau.com/profile/dunandbradstreetgovanalytics/viz/home/EconomicImpactAnalysisofHurricaneHarvey/Story1">https://public.tableau.com/profile/dunandbradstreetgovanalytics/viz/home/EconomicImpactAnalysisofHurricaneHarvey/Story1</a></p>	<p>TX - DOT - Highway Conditions</p> <p>Arc GIS - TS Harvey</p> <p>Healthcare - Hurricane Resources</p> <p>TX Dept. of Public Safety - Situati</p> <p>add1 TXDOT info on roads/ferrie</p> <p>Healthcare Ready - RxOpen Map</p> <p>Evacuations List - Texas</p> <p>American Logistics Aid Network</p> <p>ARC Shelters</p> <p>Louisiana DOT</p> <p>SABER</p> <p>City of Corpus Christie's Harvey W</p> <p>DOE - Hurricane Harvey Situation</p> <p>FEMA's Hurricane Harvey Page</p> <p>EPA Fuel Waivers</p> <p>Dept. of Energy Situation Reports</p> <p>CDC Hurricane Harvey page</p> <p>JLE DOT Emergency</p> <p>File Share</p> <p>Name</p> <p>Federal Motor Carrier - Regional Emergen</p> <p>Addicks and Barker Status Summer 2017,</p> <p>RAIN Awareness Report Railroads Hurric</p> <p>AirBnB - Disaster Response and Relief O</p> <p>DPS, 082417.1200_Statewide Conferen</p> <p>Walgreens 829 site status report.pdf</p> <p>Harvey_LeadershipMapBook_20170830</p> <p>Victoria County - Re-Entry Instructions pe</p> <p>Site_Status.pdf</p> <p>OOA+ISO+Extended+Outages+PDM141</p> <p>Victoria County - Tier ER Letter.docx</p> <p>Economic Impact Analysis of Hurricane H</p> <p>Victoria County - Vehicle Placard Tier ER</p>

**Owner/Lead Agency:** FEMA (Office of External Affairs, Private Sector Division)

**Description:** The National Business Emergency Operations Center (NBEOC) is FEMA's virtual clearing house for two-way information sharing between public and private sector stakeholders in preparing for, responding to, or recovering from disasters. Participation in the NBEOC is completely voluntary and open to all members of the private sector, including large and small businesses, chambers of commerce, trade associations, universities, think-tanks, and non-profits. During response activities, NBEOC members are linked into FEMA's National Response Coordination Center (NRCC), activated Regional Response Coordination Centers (RRCs), and the broader network of emergency management operations to include our state and federal partners.

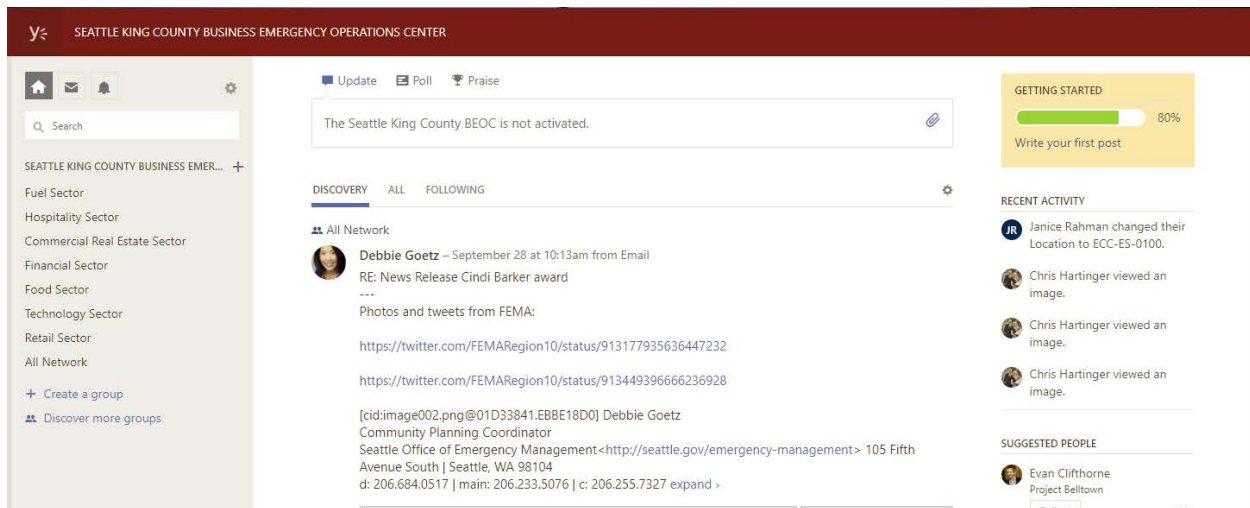
### Portal Characteristics:

- Joining the NBEOC puts you on a contact list for notifications of NBEOC activity
- During response activities, NBEOC sessions are held in a webinar format where briefs are provided and open discussion occurs
- NBEOC generally only activity occurs where there is a federally declared disaster. State and local emergency managers generally participate in NBEOC webinars when their jurisdictions are within the declared disaster area

**Information Sensativity:** Publicly available

**URL:** <https://www.fema.gov/nbeoc>

## Seattle / King County Business Emergency Operations Center (BEOC)



**Owner/Lead Agency:** Microsoft Yammer / Seattle & King County Offices of Emergency Management

**Description:** The Seattle King County Business Emergency Operations Center (NBEOC) is built in the Microsoft Yammer social media platform. The BEOC offers two-way communication between Seattle and King County Office of Emergency management in a social media format with groups organized around infrastructure sectors and message boards the share information.

### **Portal Characteristics:**

- Need a Yammer account to participate
- Access to group and sub-groups granted by administrator
- Accessible during activations of the Seattle Emergency Operations Center and/or the King County Regional Emergency Communication Coordination Center
- Relevant to areas under the City of Seattle or King County jurisdiction

**Information Sensativity:** Publicly available, requires a Yammer account and permission to join the group from an administrator

**URL:** <https://www.yammer.com/kingcountybusinessemergencyoperationscenter>



# **INTEGRATION FRAMEWORK: PRIVATE SECTOR – STATE EMERGENCY OPERATIONS CENTER**

Washington Military Department  
Emergency Management Division  
Private Sector & Infrastructure Program

Framework for private sector participation in SEOC activations

## Background

The private sector is a vital part of the emergency management team. The state's vast network of business, industry, academia, trade associations, and other non-governmental organizations are equal - and equally responsible - partners in every phase from preparedness to response and recovery to mitigation. Acknowledging that the private sector owns roughly 85% of the state's infrastructure, public-private coordination is especially important. To facilitate this, the WA Emergency Management Division (EMD) maintains a framework to exchanging information and coordinate response operations with private sector partners.

## Integration Framework

This framework allows for two levels of interaction with the WA State Emergency Operations Center (SEOC):

### Observation

Any private sector organization may access information in the SEOC during an activation through the WebEOC incident management application and/or the Washington Information Sharing Environment (WISE) geospatial application. Although this allows an organization access to information via these two applications in a “view only” capacity – it does not allow them to contribute information to the applications or communication through them. Note: “View only” access to these applications does not include certain information categories.

WebEOC: <https://mil.wa.gov/other-links/web-eoc>

WISE: <https://wise.wamil.us/wmd/home/>

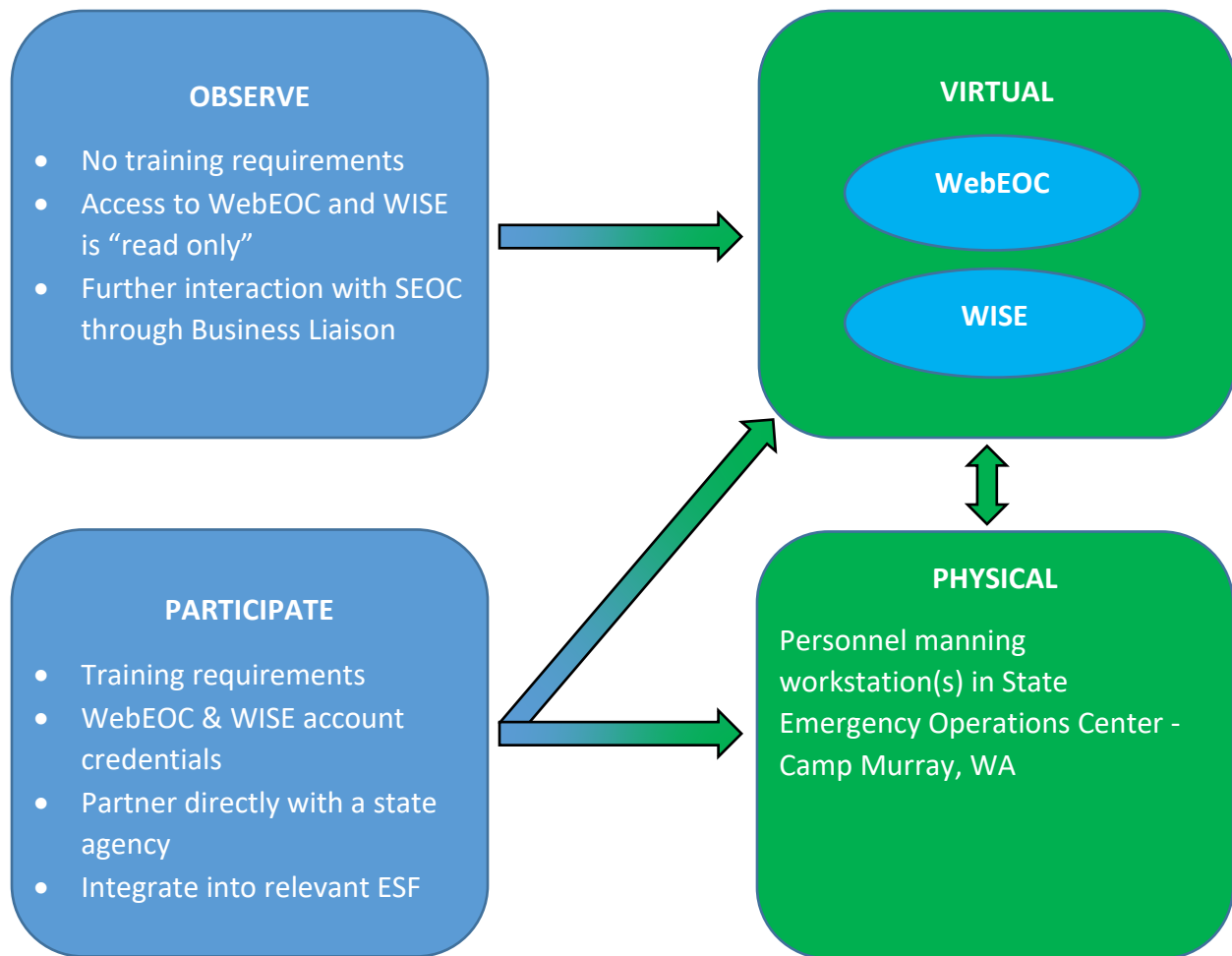
### Participation

Includes account credentials for WebEOC and WISE. Participation in SEOC activations occurs through the relevant Emergency Support Function (ESF) as coordinated through the EMD Private Sector Program. Participation may be virtual, via SEOC communications and incident management software (WebEOC & WISE), or through a physical presence in the SEOC. Private sector participation is encouraged at all relevant ESFs within the SEOC, and may be sought by state emergency managers under specific circumstances. To participate in SEOC activations, private sector personnel should meet the requirements laid out in the State Emergency Operations Center Staff Training Plan (attached).

Private sector requests to participate in SEOC activations should be made to the EMD Private Sector Program via email or telephone.

EMD Private Sector Program

[business@mil.wa.gov](mailto:business@mil.wa.gov) | 253-512-7054



The above figure depicts the two different levels of interaction a private sector organization may pursue (**observing** through virtual platforms, **participating** through virtual platforms, or through a physical presence in the SEOC).

# WebEOC Private Entity User Agreement

Between

**WASHINGTON STATE MILITARY DEPARTMENT (MIL)**

and

\_\_\_\_\_**(Private Entity User)**

This Private Entity User Agreement is entered into by and between the Washington State Military Department (MIL) and \_\_\_\_\_ (Private User) to establish the use, content, and disclosure of documents/data to be shared on the WebEOC server that is maintained by MIL.

## A. KEY PERSONNEL

The individuals listed below shall be considered Key Personnel. The Key Personnel for each of the parties shall be the contact person for all communications regarding the performance of this Agreement. Any substitution of Private User's Key Personnel must be made by written notification to MIL.

Private Entity User		Military Department	
Name		Name	Debbie Bostwick
Title		Title	WebEOC Administrator
E-Mail		E-Mail	debbie.bostwick@mil.wa.gov
Phone		Phone	253-512-7020
Address		Address	Bldg 20, MS: TA-20 Camp Murray, WA 98430-5122

## B. DEFINITIONS

- Washington Military Department (MIL), Emergency Management Division (EMD) Director:** The Director of MIL's EMD, is the sponsoring authority for WebEOC. The EMD Director or designee approves requests to become a WebEOC User and revokes such approval, if needed.
- Private Entity User (Private User):** A private entity that has been authorized use of WebEOC by the EMD Director or designee.
- User:** A Washington state agency, local government, tribe, federal entity, Private User or other entity that has been authorized use of WebEOC by the EMD Director or designee.

4. **WebEOC Administrator:** The position within the MIL responsible for the administration, training, and technical support of WebEOC. The WebEOC Administrator creates User accounts and grants data access permissions based on User credentials.
5. **WebEOC Coordinator:** Each User will designate a WebEOC Coordinator to provide local administrative and technical support. WebEOC Coordinators will serve as liaisons with the WebEOC Administrator.

## C. CONDITIONS

As a condition of being approved as a WebEOC Private User, the undersigned, as the Private User's authorized representative, agrees to observe and strictly adhere to the following requirements:

### 1. **Official Business Only**

MIL maintains a crisis information management system, commonly referred to as WebEOC, available for use by Washington state agencies, local governments, tribes, private entities, and federal entities (Users), as a collaborative tool for managing and sharing emergency management information. The purpose of WebEOC is to provide a network platform for Users to post, receive, share, organize, process, and manage emergency and public safety information from and with the State Emergency Operations Center (EOC) for the MIL's emergency management purposes authorized under RCW 38.52. No other use shall be permitted, and personal use is prohibited. Users shall have no expectation of privacy in the use of WebEOC.

### 2. **Disclosure of Public Records–Defense and Hold Harmless**

All information retained on the MIL's WebEOC server, including information about use of WebEOC or posted by a User onto the WebEOC server, is a public record subject to public disclosure under RCW 42.56, the Public Records Act (PRA).

MIL will process all requests received for WebEOC records in accordance with MIL's Public Records Policy.

### 3. **Termination of Use**

MIL reserves the right to terminate use of the WebEOC system and the User account for any reason and at any time within its sole discretion, including, but not limited to, violations of law, this Agreement, operational security, or negligent or unauthorized use.

### 4. **Account Restrictions**

If the User or MIL determines that use of the WebEOC account violated a law, this Agreement, or operational security, or was for an unauthorized purpose, MIL and the User may agree the User can continue using WebEOC if the User restricts the individual(s) involved from accessing any of the User's account, investigates the violation or unauthorized use, and implements appropriate disciplinary actions, if applicable.

## **5. Sanctions**

A violation of law, this Agreement, or operational security involving the use of WebEOC may result in termination of WebEOC access privileges and User Account, referral for appropriate disciplinary action (if applicable), and civil and criminal sanctions as allowed by law.

## **6. User Accounts and Passwords**

Each User is assigned an appropriate number of accounts, usernames, and passwords to be used for authentication. Passwords must be kept secret. It is the User's responsibility to protect User passwords. The User will be held accountable for all activity under the User's accounts. If a User account is compromised, the User must report it to the WebEOC Administrator immediately.

## **7. Report Security Violations**

If the User becomes aware of any violation of these requirements or suspects that the User's password(s) may have been compromised or acquired by a non-User, it is the User's responsibility to report that information immediately to the WebEOC Administrator.

## **8. Period of Agreement**

This agreement shall remain in full force and effect so long as the User has access to or maintains records in the WebEOC server.

Users shall direct any questions regarding the proper operation or security of the WebEOC system to the WebEOC Administrator.

**Private User's Authorized Representative:**

I have read and agree to the Private Entity User Agreement.

Organization/Entity: \_\_\_\_\_

Print Name: \_\_\_\_\_

Title: \_\_\_\_\_

Signature: \_\_\_\_\_ Date: \_\_\_\_\_

**Emergency Management Division Director or Designee:**

I have authorized the Private User organization/entity named above to have one or more Washington State WebEOC Accounts.

Print Name: Robert Ezelle \_\_\_\_\_

Title: EMD Director \_\_\_\_\_

Signature: \_\_\_\_\_ Date: \_\_\_\_\_

BOILERPLATE APPROVED AS TO FORM:

Dawn C. Cortez (signature on file \_\_\_\_\_)  
Assistant Attorney General