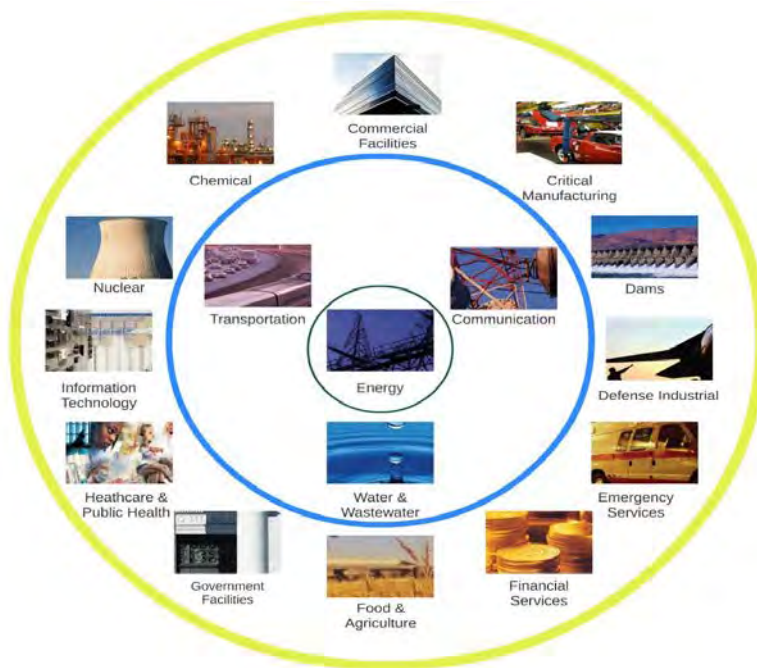


Meeting Notes

Infrastructure Resilience Sub-Committee (IRSC)

3rd Quarter 2017 | July 18, 2017 | Camp Murray, WA

Topic: Public-Private Collaboration for Infrastructure Resilience



Introduction & Background

Meeting was attended by approximately 32 individuals from both the public and private sector (20 public, 12 private) . See the [IRSC Website](#) for previous meeting notes, background and the IRSC Charter.

Update on Resilient WA Subcabinet

In November 2016, [Governor Inslee directed state agencies](#) to address 5 recommendations from the [2012 Resilient WA Report](#) and 2 directives from the [Cascadia Rising After Action Report](#). In response to this directive, WA Emergency Management is facilitating a [Resilient WA Subcabinet](#) including workgroups relating to critical transportation, energy resilience, and bulk fuel distribution.

The workgroups briefed current efforts and gaps/barriers to the Governor on May 3. During the meeting, the Governor requested more information on Resilient WA Recommendations 1, 8 & 9 as well as an update on emergency communications. The final report, to include implementation plans from each workgroup, is due no-later-than August 30th and will be followed by a brief out to the Governor in early September.

State Emergency Communications

A 30-minute presentation was provided by the Military Department's IT Division that overviewed the emergency communications technologies and procedures currently in use by the WA State Emergency Management Division. This presentation is attached at the end of these notes.

Discussion:

- Eric Holdeman - First Net for first responders and now talking about second responders. AT&T selected as contractor for FirstNet infrastructure. FirstNet is coordinating meetings within WA over the next few weeks (Bellingham 7/18, Vancouver 7/19, Puyallup soon among others). Commenting on the plan, turn back into the state, then Governor has 45 days to review the plan. More information on FirstNet may be found on the website: <https://www.firstnet.gov/>
- Brief group discussion on Government Emergency Telecommunications Service (GETS):
 - GETS: <https://www.dhs.gov/government-emergency-telecommunications-service-gets>
 - GETS FAQ: <https://www.dhs.gov/gets-faq>

Information Sharing for Infrastructure Resilience

WA EMD has drafted language to go into the State's Comprehensive Emergency Management Plan (CEMP) to accommodate the integration of private sector entities into the state EOC. This includes 2 levels:

1. **Observation.** Businesses may passively observe the state's response via "view only" access to WebEOC and the Washington Information Sharing Environment (WISE). No coordination is needed with the state, the general public may view either of these.
 - Signing in as a Guest in WebEOC maybe achieved by following the steps located on the WA EMD website: <https://mil.wa.gov/uploads/pdf/emergency-management/genericuserwebeoc82guide2016.pdf>
 - Anyone may view the WISE map online by visiting the public URL: <https://wise.wamil.us/wmd/home/>
2. **Participation.** Private Sector participation is encouraged at all relevant ESFs within the SEOC, and may be sought under specific circumstances. Participation may be virtual, via SEOC communications and incident management software, or through a physical presence in the SEOC. In order to establish a formal role in the SEOC, a private sector organization should:
 - Coordinate with EMD Private Sector Program to facilitate incorporation into relevant ESF. Each private sector organization must have a host state agency who coordinates their participation in the ESF. Private Sector representatives may participate via virtual connection or physical space within the SEOC.
 - Complete relevant training (all courses are free):
 - [SEOC Foundations Training](#) (in person, hosted by EMD)

- [IS-230.D: Fundamentals of Emergency Management](#) (FEMA course, online)
- [IS-200.B: ICS for Single Resources and Initial Action Incidents](#) (FEMA course, online)
- [IS-100.B: Introduction to Incident Command System](#) (FEMA course, online)
- [IS-700.A: National Incident Management System \(NIMS\) An Introduction](#) (FEMA course, online)
- [IS-800.B: National Response Framework, An Introduction](#) (FEMA course, online)

In addition to the above access protocol, the group recognized that there is an over-abundance of different tools present including:

- US Department of Energy's Eagle-I
- WA EMD WISE
- WA Department of Commerce's Washington State Energy Dependency Tool (WSDet)
- US Department of Homeland Security's Infrastructure Protection Gateway (IP Gateway)

WA EMD agreed to put together a product by next meeting that overviews these different systems, characterizes them, and identifies gaps to be closed. This will be out to the group by the fall meeting.

Infrastructure Prioritization Survey

This survey was developed by the Washington State Fusion Center (WSFC) and is hosted by the WA Emergency Management Division. The purpose of this tool is to establish baseline connections between different infrastructure owner/operators. The draft survey may be previewed here: <http://bit.ly/2tc5NKn> (Username: Critical.Infrastructure | Password: #2010Willywonka*).

Discussion:

- This might not work for entities with a lot of assets. The Water Supply Forum is already working on something similar with water sector.
- This is targeted outreach to those facilities that we don't know about but would like to know more about. We will not be focusing on those items we already know about. This is a prioritization tool. It is not as intrusive as it sounds in conversation.
- Questions for Deb: what is the criticality of your asset – what does that mean? What is the vulnerability is the focus for the survey (seismic, technological/man-made, etc.). Narrow focus and scenario driven. Becomes problematic when resources (private sector) is in multiple counties and are trying to coordinate.
- Facilities – get out of mind set of thinking about sub-stations. Think about Situation Operation Center instead. Suggestion – change facilities to system. Control Centers don't even have name on them – they are very secure.
- What kind of information are we sharing back? Find out about stuff on the news (not ideal). WebEOC and WISE can be used. Focusing on systems that are open.
- Proposed having another meeting to focus on information that will be shared with the private sector.
- Proposed having another meeting to focus on EEIs - Help to influence WISE, WebEOC, etc.

Setting Priorities for Next Quarter

Based on the discussion by the group today, the following items will be the primary focus for next quarter:

- Establish a core-planning group composed of infrastructure owner/operators from lifeline sectors. Have the group meet the hour before the larger IRSC group meets
- Group discussion focused on development of Essential Elements of Information (EEl)s both from the private sector perspective and the public sector perspective
- Provide a draft document that provides an overview of all the information sharing systems currently in use. The document should characterize each tool, describe its intended use, and identify gaps between the systems. The group will review the document and discuss at the fall meeting.
- [Brief on the Business Re-Entry \(BRE\) Registration](#) Program that is about to be launched for businesses in Washington.

A photograph of a modern, multi-story building with a facade of light-colored, horizontally-slatted panels and large rectangular windows. A tall, red and white lattice radio tower stands behind the building. The building is situated on a grassy area with some trees and shrubs in the foreground and background. The sky is overcast.

ESF 2 Briefing

Telecommunications & Warning Systems

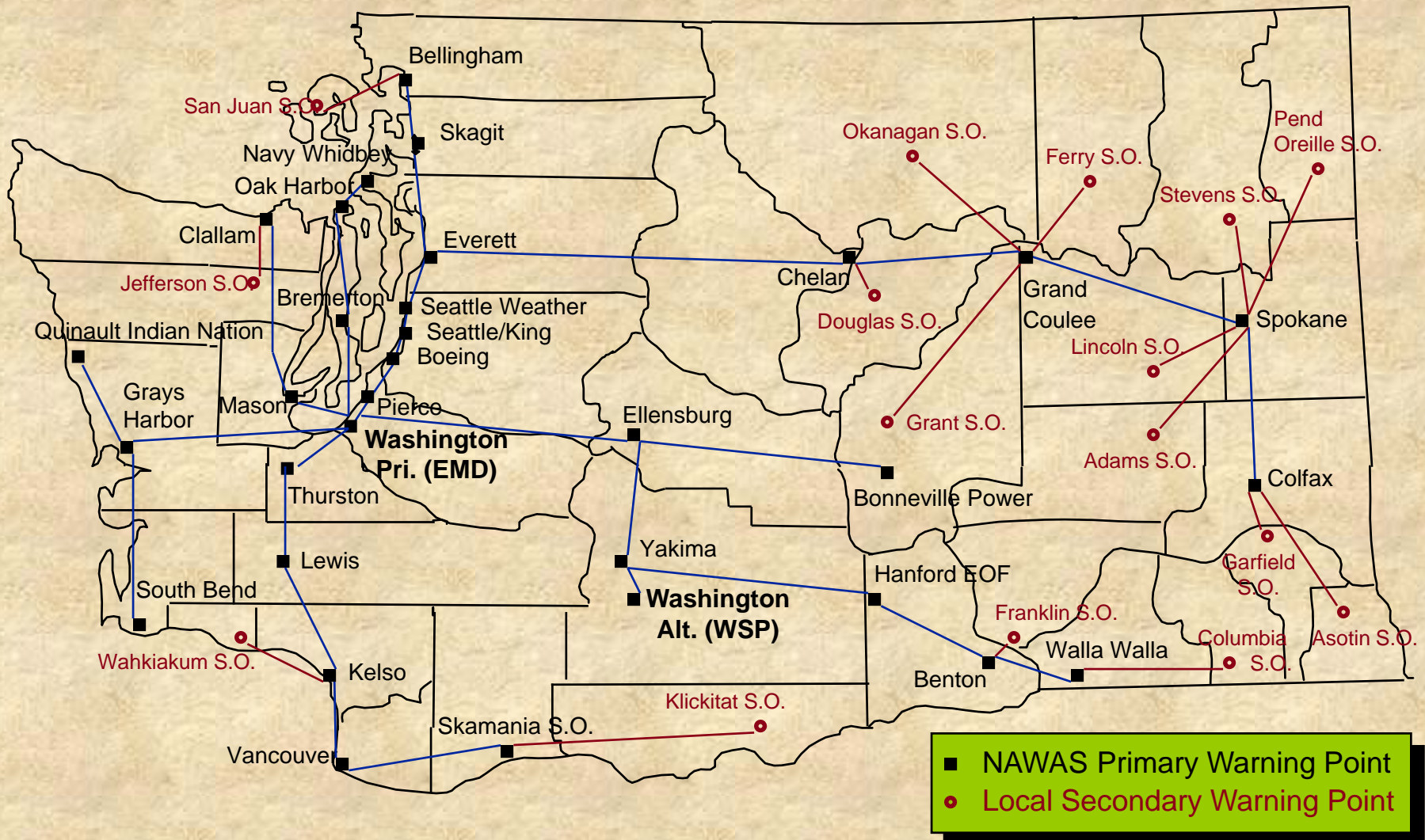
Telephone



- **Primary means of communications**
- **PBX Ayava G3si**
- **Use Direct-Inward-Dial for incoming calls, Centrex service for outgoing calls via SCAN**



National Warning System (NAWAS)



Washington State Comprehensive Emergency Management Network (CEMNET)



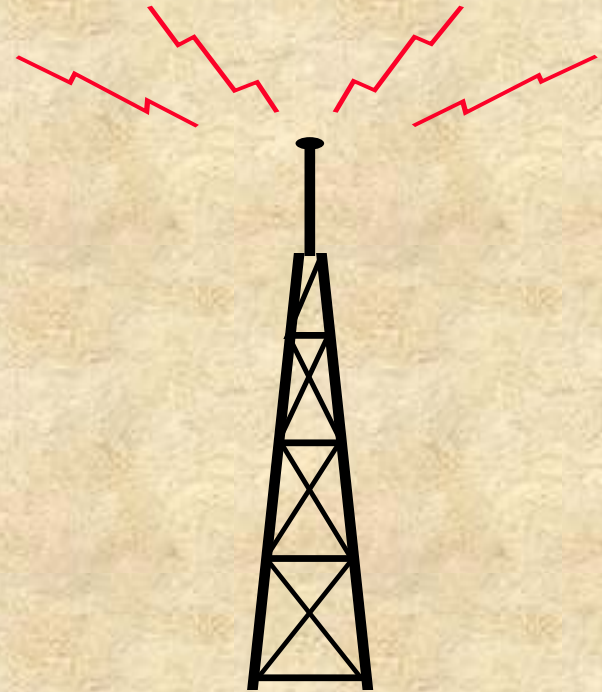
On Scene Command and Control Radio (OSCCR)



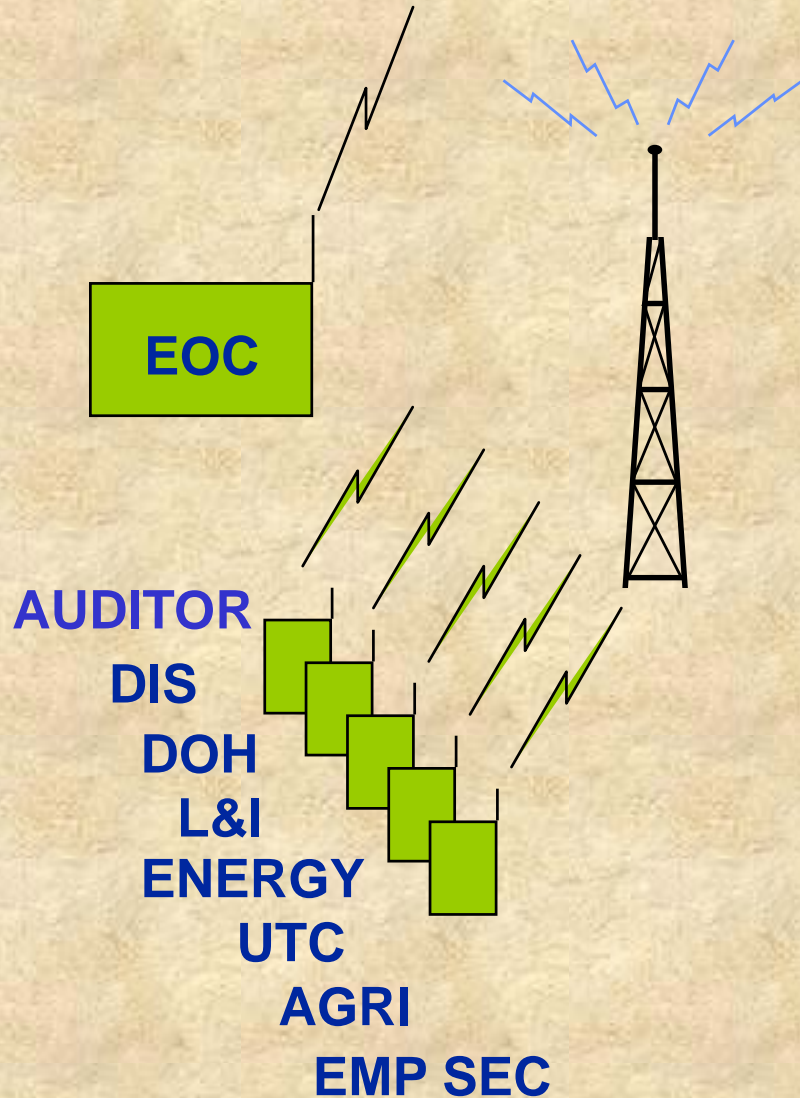
State wide
156.135 MHz

Radio Amateur Civil Emergency Services (RACES)

- **FEMA sponsored program for ensuring emergency communications are available**
- **Support provided by amateur radio licensed, emergency worker registered volunteers**
- **Support includes voice and data radio capabilities**
- **State RACES plan governs how amateurs are to be used.**
- **Establishes nine RACES regions**

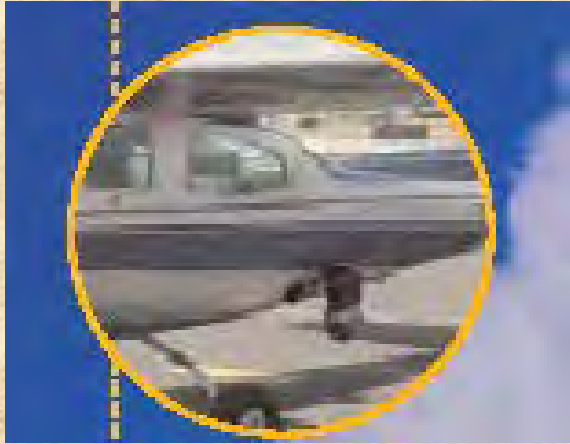


800 Mhz State Agency Emergency Network (STAEN)



- Uses an additional repeater on DOT system at Capitol Peak
- State EOC monitors a control station on a 24-hour basis and serves as net control
- Network used on an emergency basis on a specific “talk group”
- Periodically tested to ensure availability

FLIR with Microwave Downlink



- ✓ Forward Looking Infrared (FLIR)
- ✓ Gyro-stabilized color camera with zoom lens and infrared optics
- ✓ Real-time air-to-ground audio/ video/data microwave downlinks
- ✓ Provides long-range, day and night, search and surveillance capabilities



Regional SMART Talkgroups



NESMART - CT, DE, MA, ME, NH, NY, NJ, PA, RI, and VT (pending)

Manager: Connecticut State Police



MWSMART - IA, IL, IN, KS, KY, MI, MN, MO, OH, ND, NE, SD, WI, and WV

Manager: IN Department of Homeland Security



M-SMART - DC, DE, MD, PA, VA, and WV

Manager: Allegany County (MD) Dept. of Public Safety and Homeland Security



SWSMART - AZ, CA, CO, NV, NM, OK, TX, and UT

Manager: Contra Costa County Fire Protection District



SESMART - AL, AR, FL, GA, KY, LA, MS, NC, SC, TN, VA, and WV

Manager: Fairfax County (VA) OEM/Public Safety Comm.



G-SMART - AL, FL, LA, MS, TX, PR, and VI

Manager: LA Governor's Office of Homeland Security and Emergency Preparedness



NWSMART - AK, CA, ID, MT, OR, WA, and WY

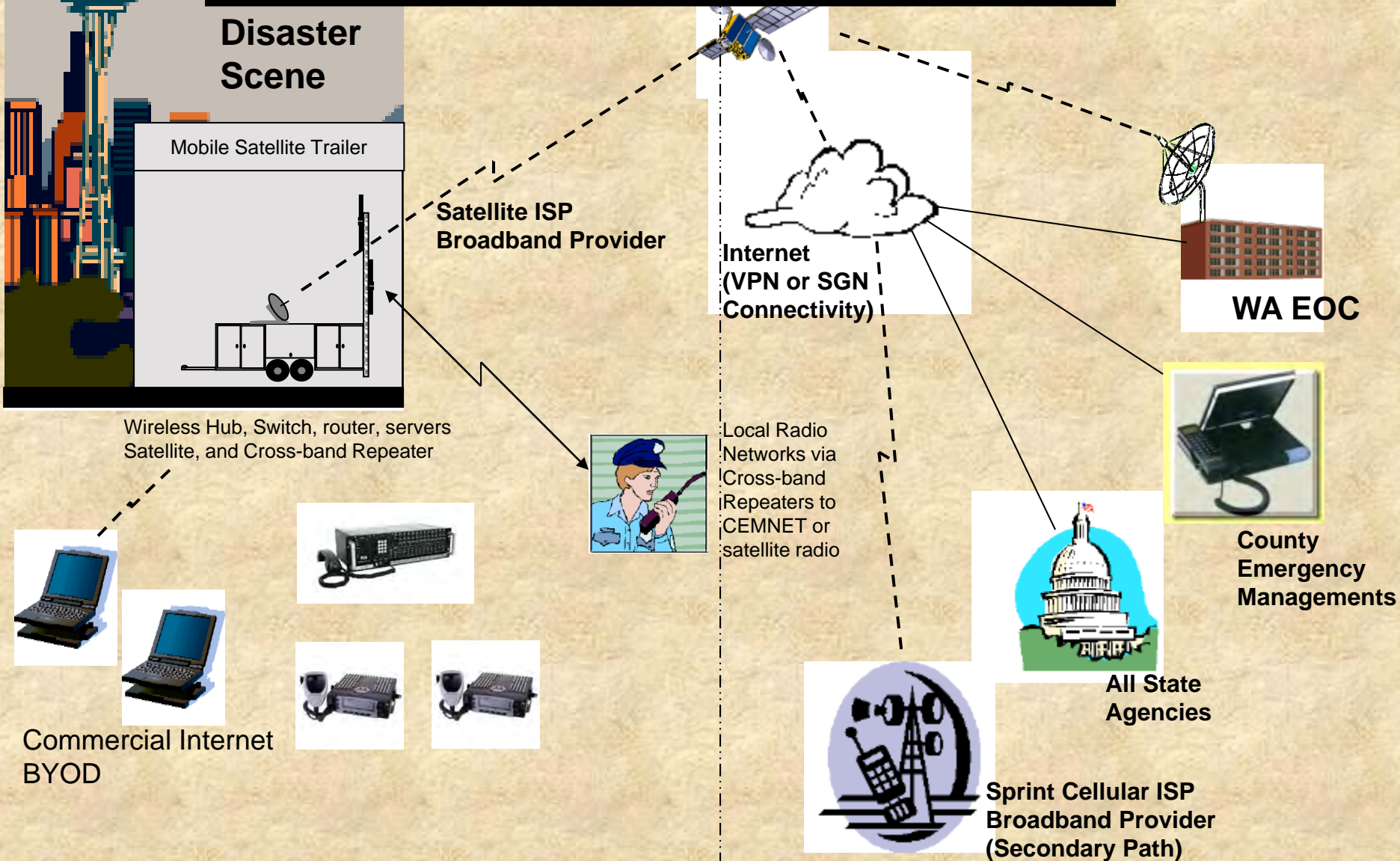
Manager: WA State Emergency Management Division



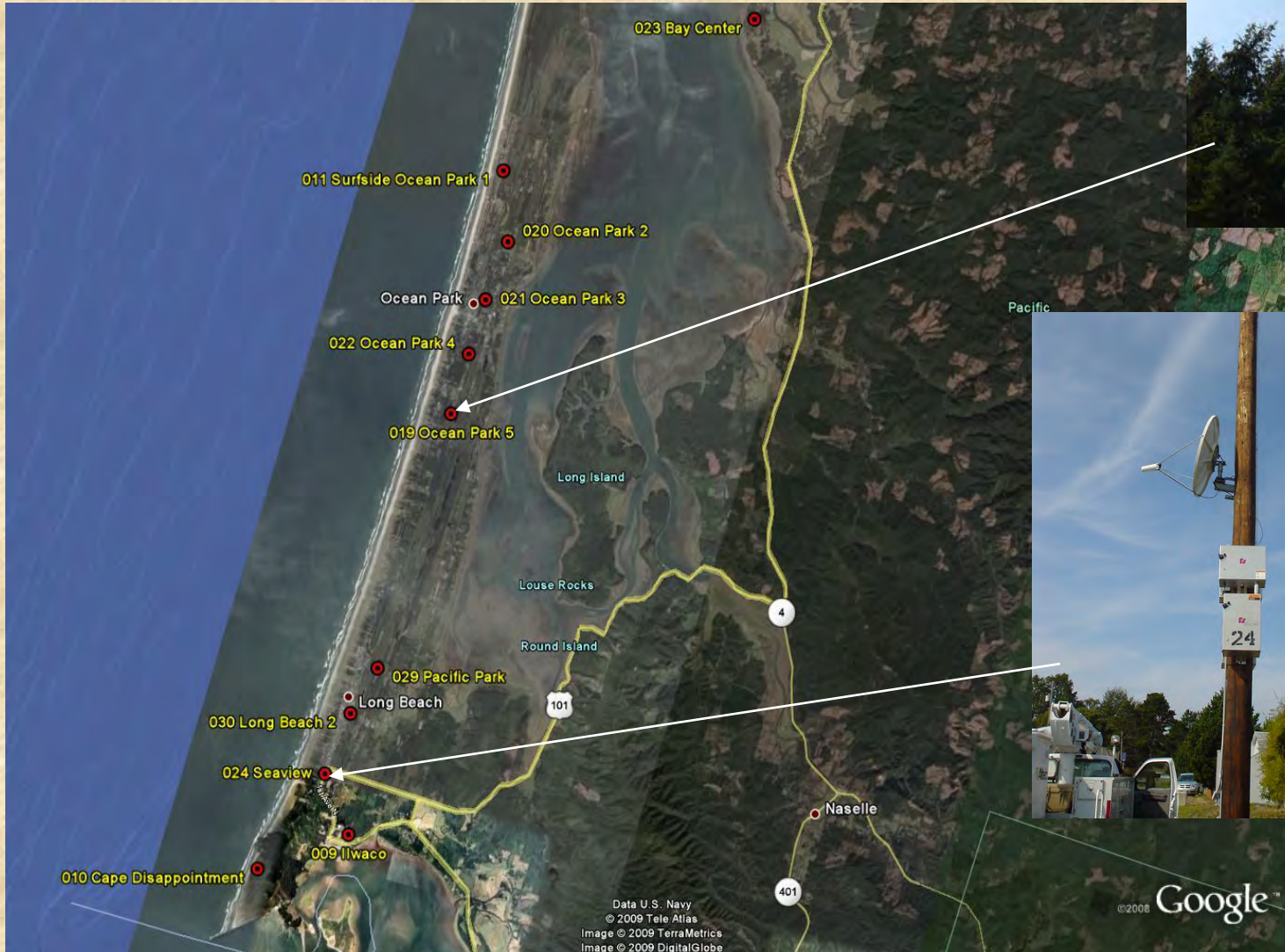
CUSEC-1 - AL, AR, IL, IN, KY, MS, MO, and TN

Manager: Central United States Earthquake Consortium

Mobile Emergency Communications Vehicle



Tsunami Sirens

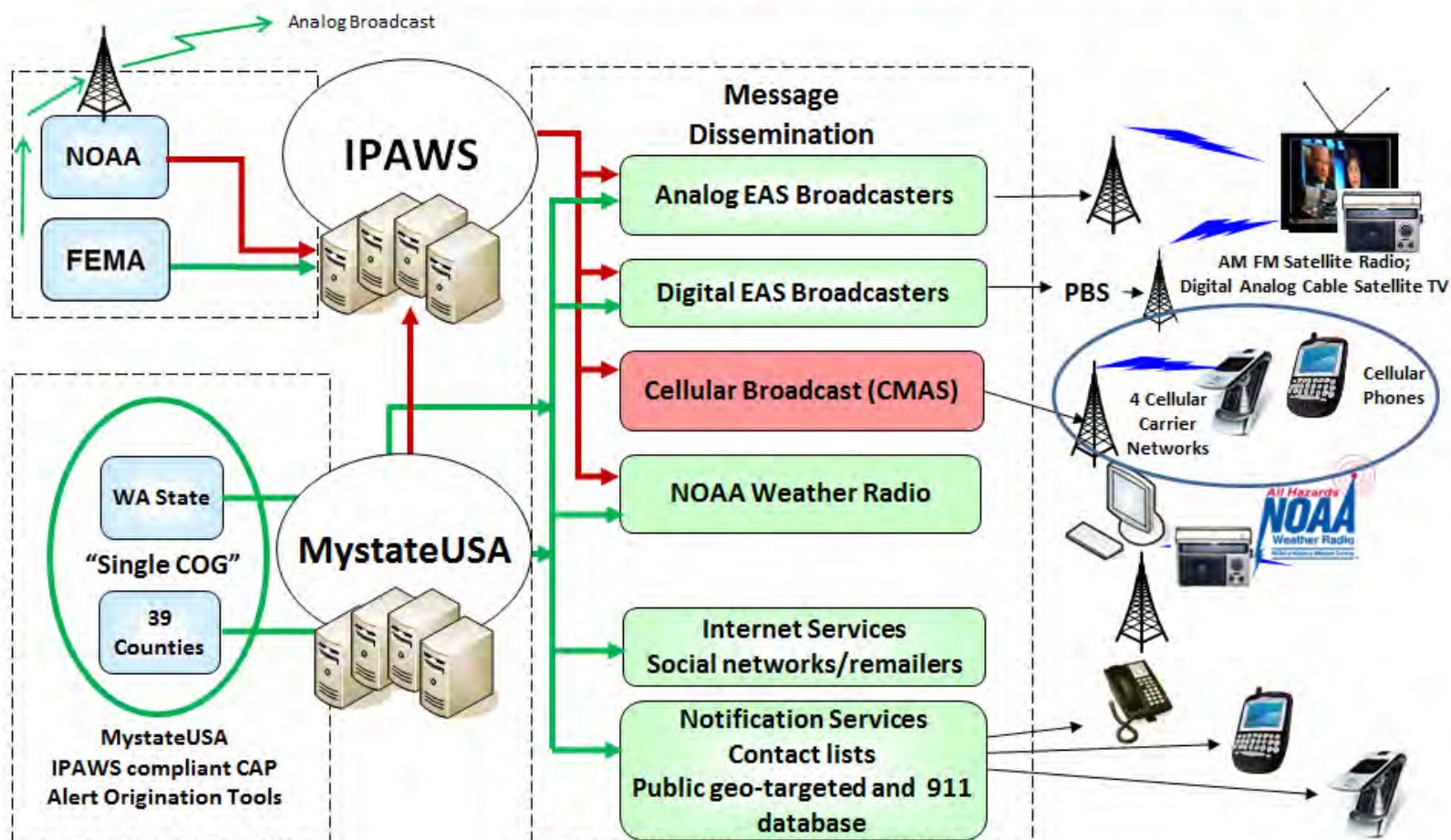


What EAS Message ?



Washington State Example – Mystate USA

WA-CAP and IPAWS offer redundancy



Washington EAS State Relay Network

